

# Radian® 3RX

diono

Car Seat Instruction Manual

Manuel d'Instructions du Siège d'Appoint

Manual de Instrucciones de Silla de Carro

5-120 lb / 2.3-54 kg

All-In-One Convertible

Tout-En-Un Convertible

Convertible Todo-En-Uno



**READ INSTRUCTION MANUAL**  
before using this child restraint

**LEA LAS INSTRUCCIONES**

antes de usar este asiento de seguridad para niños

**LIRE LE MODE D'EMPLOI**

avant d'utiliser ce dispositif de retenue pour enfant

# CONTENTS

## WE LOVE TO HELP

**Hello there, Welcome to the Diono family!** We've created this lovingly engineered car seat to help keep your child comfortable and safe with all of the goods and none of the gimmicks. ***We look forward to lending a helping hand each and every day.***



**Any questions?**

**Diono U.S.: 1-855-463-4666**

**Diono Canada: 1-866-954-9786**

<b>FRENCH</b>	<b>68</b>
<b>SPANISH</b>	<b>142</b>
<b>REGISTER THIS CAR SEAT</b>	<b>4</b>
Certification	6
Safe Use Guide	7-11
Warnings	12-15
Car Seat After Collision	16-17
Parts	18-19
Vehicle Seating Locations	20-22
LATCH/UAS	23
Top Tether	24-25
<b>First Setup</b>	<b>26-30</b>
Unfolding/Folding	
Harness Setup	

Infant Support	
Adjustable Headrest	
Recline Level Indicator	
<b>REAR-FACING INSTALLATION</b>	<b>31-40</b>
Rear-Facing Checklist	
LATCH Installation	
Lap/Shoulder Belt Installation	
Lap Belt Installation	
<b>FORWARD-FACING INSTALLATION</b>	<b>41-54</b>
Forward-Facing Checklist	
Adjustable Bottom	
SafeStop™	
LATCH/UAS Installation	
Lap/Shoulder Belt Installation	
Lap Belt Cushion	
Lap Belt Installation	
<b>BOOSTER MODE INSTALLATION</b>	<b>56-57</b>
Changing Harness Position	58-59
Harness Strap Removal/Replace	60-61
Aircraft Installation	62
Comfort Features	63
Belt Locking Clip	64
Care and maintenance	65-66
Warranty	67-69

# REGISTER THIS CAR SEAT

Please take a few moments to promptly fill out and return the attached card or register online using the direct link to the manufacturer's registration website provided.

Child restraints could be recalled for safety reasons. You must register this restraint to be reached in a recall. Send your name, address, e-mail address if available, and the restraint's model number and manufacturing date to:

**Diono U.S., PO Box 77129, Seattle, WA 98177**

or call 1-855-463-4666 or register online at: <http://diono.com/product-registration/>

**Diono Canada ULC, 2139 Wyecroft Rd, Oakville, ON L6L 5L7** or call

1-866-954-9786 or register online at: <http://diono.ca/product-registration/>

For future reference, in the case of a change of address, please take a moment to fill out the following information:

**Model Number:** \_\_\_\_\_

**Manufacture Date:** \_\_\_\_\_

This information can be found either on the registration card or on the manufacturing label located on the seat.

For recall information, call the U.S. Government's Vehicle Safety Hotline at 1-888-327-4236 (TTY: 1-800-424-9153), or go to <http://www.NHTSA.gov>.

Time. It goes so fast...

Who would have thought that over two decades have passed since we first stepped out into the world and started a business dedicated to family travel.

Well the world has changed a lot, but we're proud to say that we haven't (sure we've grown up), but we are still as passionate about what we do today as we were back then.

Our story is 'made of Seattle', a city like no other. This is a place where creative minds & innovators rub shoulders within a landscape of adventure; a place where being 'a little different', is the everyday norm.

With a love for design and an understanding of modern parenting, we strive to create amazing products, so that you and your little ones can celebrate the joy in every journey.

People who own Diono products can be found in all four corners of the big, blue, green ball we all call home. Some are fans & followers, some are supporters, tweeters, social media magicians, miracle moms and devoted dads.

Without your passion, pictures, words and stories, we would never hear your voice. So tell us about your patch of grass, and join in the hustle and bustle at [diono.com](http://diono.com).

Share your journey @diono social  
or find the latest news on,



## CERTIFICATION



This child restraint system conforms to all applicable requirements of U.S Federal Motor Vehicle Safety Standards (FMVSS) 213 and Canada Motor Vehicle Safety Standards (CMVSS) 213, 213.1, 213.2.



This child restraint is certified for use in aircraft only when in harness mode.



This child restraint is not certified for use in aircraft when used in booster mode. Aircraft seats do not have shoulder belts which are required for use with this booster.

Register this restraint with the manufacturer.

Diono and the US Federal Aviation Administration (FAA) strongly urge you to secure your child in a child restraint system (CRS) or device for the duration of your flight. Please contact the airline for their specific policies.



**WARNING – FAILURE TO FOLLOW THESE INSTRUCTIONS AND THE PRODUCT LABELS CAN RESULT IN SERIOUS INJURY OR DEATH TO YOUR CHILD.**

**YOUR CHILD'S SAFETY DEPENDS ON YOU. DEATH OR SERIOUS INJURY CAN OCCUR.**

No child restraint can guarantee protection from injury in every situation, but proper use helps to reduce the risk of serious injury or death.

Carefully read and understand all instructions and warnings in this manual. Your child's safety depends on you knowing how to setup, install and use this child restraint properly.

Choose the correct mode of use for your child, depending on their weight.

This child restraint is designed for use only with children who weigh 5–120 lb (2.3–54 kg) and whose height is 57 in (144 cm) or less in the following modes.

# SAFE USE GUIDE

**Rear-facing:** 5–50 lb (2.3–22.7 kg) and whose height is 18–44 in (46–112 cm).

**Forward-facing:** 22–65 lb (10–29.5 kg) and whose height is 30–57 in (76–145 cm)

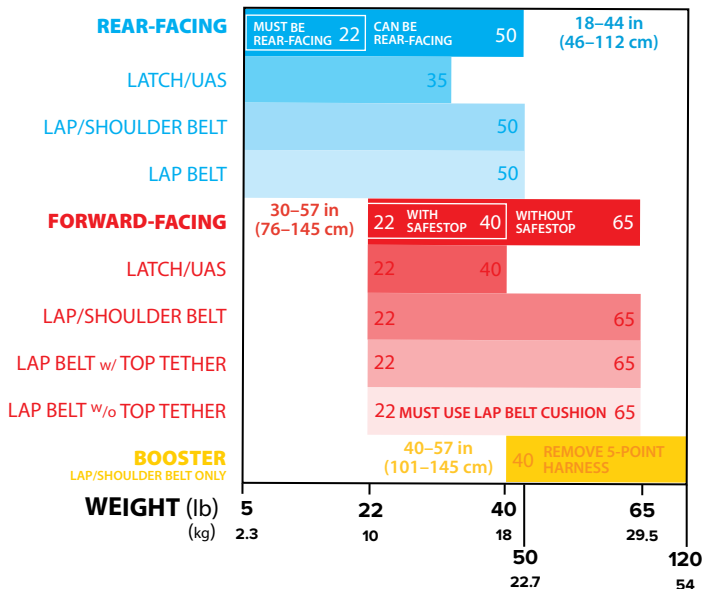
**Booster:** 40–120 lb (18–54 kg) and whose height is 40–57 in (101–145 cm).

- ✓ **DO NOT** place this child restraint rear-facing in a vehicle seating location with an active front air bag.
- ✓ Choose the proper child restraint belt path
  1. **REAR-FACING SECTION**
  2. **FORWARD-FACING SECTION**
  3. **BOOSTER MODE SECTION**
- ✓ Choose a suitable location for this child restraint in your vehicle. REVIEW VEHICLE SEATING LOCATIONS.
- ✓ Install this child restraint tightly in your vehicle. Grab the sides of the seat where the vehicle seat belt or LATCH strap is and slide the child restraint side-to-side and front-to-back. If the seat moves less than 1 in (2.5 cm), it is tight enough.
- ✓ Secure harness snug and flat on your child.



## HEIGHT AND WEIGHT CHART

## INSTALLATION



# SAFE USE GUIDE

**Infants who weigh less than 22 lb (10 kg) and are under 1 year old, MUST use this child restraint rear-facing.**

For newborn infants, you must consult the infant's doctor before using this child restraint. A newborn infant may have difficulty breathing or have other medical problems when placed in a seated position.

Before installing this child restraint in a vehicle, be sure to also check the vehicle owner's manual for information on proper installation.

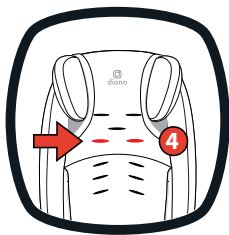
Check all installation configurations before discarding the box. Diono cannot guarantee proper fit in all vehicles.

**According to accident statistics, children are safer when properly restrained in the rear seating positions than in the front seating positions.**

**Rear-facing:** Harness straps **MUST** be at or just below the child's shoulders. Top of head must be 1.5 in (3.8 cm) below the top of the car seat shell.

**Forward-facing:** Harness straps **MUST** be just above the child's shoulders. Top of child's ears **MUST** be below top of car seat shell.

**Booster mode:** Child **MUST** be secured using **ONLY** the vehicle lap/shoulder belt. Child **MUST** weigh at least 40 lb (18 kg), with shoulders positioned at or above the 4th slot and remain properly seated for the entire ride.



**ALWAYS** install this child restraint in the back seat. The back seat is the safest place for children 12 and under. See your vehicle owner's manual for child restraint installations and instructions.

**NEVER** leave child restraint unsecured in your vehicle even when it is unoccupied. It could injure other occupants in a sudden stop or collision.

**! WARNING!**  
**DEATH or SERIOUS INJURY can occur.**



**Never place this child restraint rear-facing in a vehicle seating location with an active front air bag. Death or serious injury may occur.** If an air bag inflates, it can hit the child or child restraint with enough force to cause serious injury or death to your child. For vehicles with side passenger air bags, refer to your vehicle owner's manual for information on your child restraint installation.

Take care to secure the child properly. Snugly adjust the harness straps provided with this child restraint around your child. A snug strap should not allow any slack. It lies in a relatively straight line without sagging. It does not press on the child's skin or push the child's body into an unnatural position.

For any questions or concerns please contact diono at:

**Diono U.S.:**

1-855-463-4666 or online at [www.diono.com](http://www.diono.com)

**Diono Canada:**

1-866-954-9786 or online at [www.diono.ca](http://www.diono.ca)



- **DO NOT** use child restraint in any configuration not shown in the instructions.
- **DO NOT** modify your child restraint.
- **NEVER** install in rear-facing, side-facing or on the back of a folded down vehicle seat.
- **ALWAYS** secure this child restraint with the vehicle's child restraint anchorage system (LATCH/UAS) if available OR the vehicle seat belt.
- **NEVER** use the restraint system in a vehicle seating position where it cannot be secured tightly. A loosely installed restraint system will not protect your child in a collision.
- **DO NOT** use the LATCH/UAS system to attach this child restraint rear-facing when restraining a child weighing more than 35 lb (15.8 kg) or forward-facing when restraining a child weighing more than 40 lb (18 kg).
- **ALWAYS** use the top tether strap on this child restraint when installed forward-facing.



- **DO NOT** use any accessories, inserts or products not included with this child restraint, unless approved by Diono. Items not tested with this child restraint could injure your child.
- **NEVER** remove harness from child restraint without following the proper removal and installation instructions available from Diono.
- **DO NOT** use child restraint without seat cover installed.
- **ALWAYS** check to ensure buckle is securely latched.
- **NEVER** leave child unattended. Do not allow children to play in or around the child restraint. Child may become tangled in harness straps and suffocate or strangle.
- **ALWAYS** keep child properly secured in harness whenever child is in child restraint.



## EXPIRATION

- **DO NOT** use the child restraint if any part is damaged or broken, expired (over ten years from date of purchase), missing instructions, missing parts, or if the straps are cut, frayed, or damaged in any way. Call to find out if the damaged part or parts can be replaced.

**Diono U.S.: 1-855-463-4666**  
**Diono Canada: 1-866-954-9786**

## SAFE PRACTICES

- **DO NOT** leave loose objects, such as books, bags, etc., in the back of the vehicle. In the event of a sharp turn, sudden stop, or collision, loose objects can be thrown around and possibly cause serious injury to vehicle occupants.
- **ALWAYS** check all surfaces of restraint before securing your child. In warm weather, child restraints can become very hot. Do not allow children to play with vehicle seat belts.

# CAR SEAT USE AFTER A COLLISION

## UNITED STATES

The U.S. National Highway Traffic Safety Administration (NHTSA) recommends that car seats be replaced following a **MODERATE** or **SEVERE** collision in order to ensure a continued high level of collision protection for child passengers. In the U.S., car seats do not automatically need to be replaced following a **MINOR** collision.

**NHTSA defines a MINOR crash as one in which ALL of the following apply:**

- The vehicle was able to be driven away from the crash site.
- The vehicle door nearest the car seat was not damaged.
- None of the passengers in the vehicle sustained any injuries in the crash.
- If the vehicle has air bags, the air bags did not deploy during the crash; **and**
- There is no visible damage to the car seat.

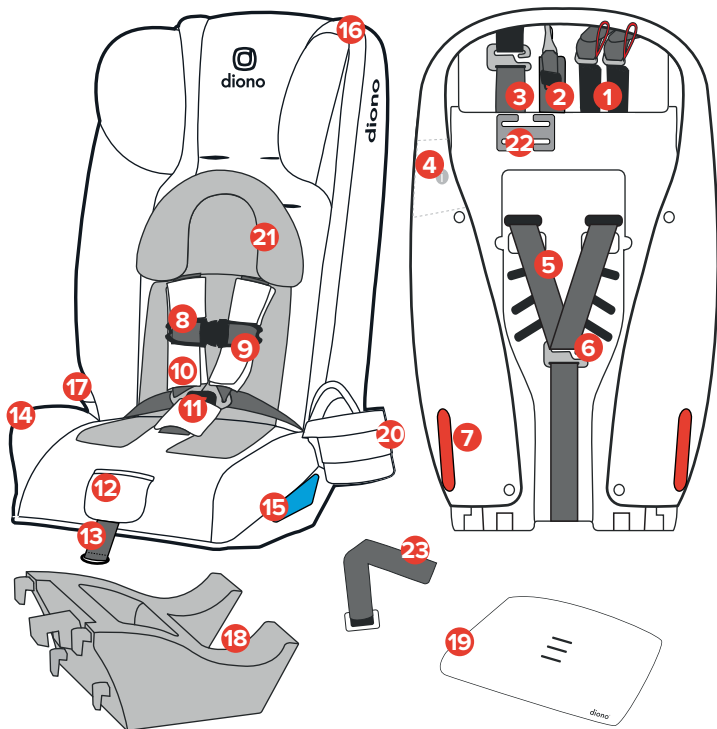
**NEVER** use a car seat that has been involved in a **MODERATE** or **SEVERE** collision.



## CANADA

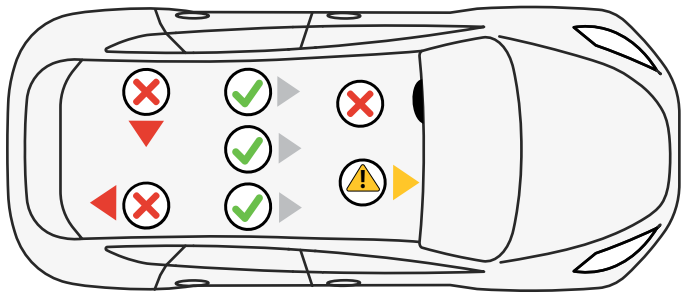
- **DO NOT USE THIS CHILD RESTRAINT SYSTEM IF IT HAS BEEN IN A VEHICLE ACCIDENT.**
- **Transport Canada designates that you MUST replace this child restraint if it has been involved in a collision.**
- You must dispose of your child seat or booster seat if the child seat was in a vehicle during a crash. Even if the child seat was empty or was not directly hit, it may be damaged.
- You must dispose of your child seat or booster seat if the shell is cracked or the webbing of the child car seat is frayed, torn or discolored.

# PARTS



- |   |  |
|---|--|
| <b>1.</b> LATCH/UAS STORAGE             | <b>15.</b> REAR-FACING<br>BELT PATH                      |
| <b>2.</b> TOP TETHER                    | <b>16.</b> UPPER BOOSTER<br>BELT GUIDES                  |
| <b>3.</b> SAFESTOP™                     | <b>17.</b> BOOSTER BELT GUIDE                            |
| <b>4.</b> INSTRUCTION MANUAL<br>STORAGE | <b>18.</b> DETACHABLE<br>REAR-FACING BASE                |
| <b>5.</b> HARNESS STRAPS                | <b>19.</b> LAP BELT CUSHION                              |
| <b>6.</b> HARNESS STRAP HOOK            | <b>20.</b> CUP HOLDER                                    |
| <b>7.</b> FORWARD-FACING<br>BELT PATH   | <b>21.</b> INFANT SUPPORT PAD                            |
| <b>8.</b> CHEST CLIP                    | <b>22.</b> BELT LOCKING CLIP                             |
| <b>9.</b> HARNESS PADS                  | <b>23.</b> REAR-FACING TOP<br>TETHER CONNECTING<br>STRAP |
| <b>10.</b> BUCKLE                       |  |
| <b>11.</b> BUCKLE PAD                   |  |
| <b>12.</b> HARNESS RELEASE              |  |
| <b>13.</b> HARNESS ADJUSTER STRAP       |  |
| <b>14.</b> EXPANDABLE SIDE WINGS        |  |

## VEHICLE SEATING LOCATIONS



### INSTALL CHILD RESTRAINT CORRECTLY

**NEVER** PLACE THIS CHILD RESTRAINT REAR-FACING IN A VEHICLE SEATING LOCATION WITH AN ACTIVE FRONTAL AIR BAG. If the airbag inflates, it can cause serious injury or death to your child. For vehicles with side air bags, refer to your vehicle owner's manual for information on your child restraint installation.

# VEHICLE SEATING LOCATIONS

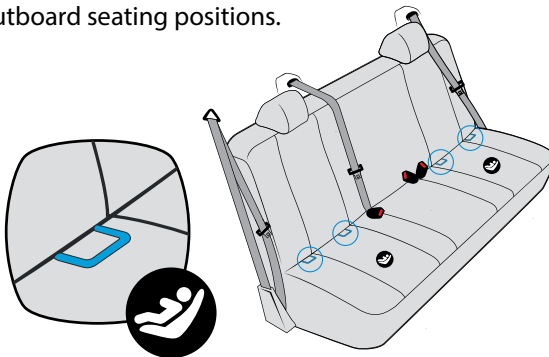
The safest seating position is one that works best for your specific child restraint, family and vehicle model.

Before installing this child restraint you must determine the method of installation and the best vehicle seating position for that method. This child restraint can be installed either using LATCH/UAS or the Vehicle Seat Belt.

**DO NOT** install using both methods at the same time.

When determining whether the child restraint can be used with vehicle LATCH/UAS anchors in the rear center seating position, it is critical that you refer to your vehicle owner's instruction book. If the child restraint does not install best in the rear center seating location, it is recommended to move to one of the outboard seating positions.

Vehicle  
**LATCH/UAS**  
anchors



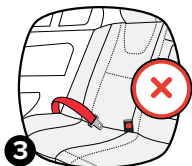
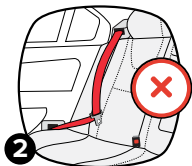
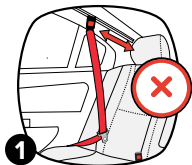
# VEHICLE SEATING LOCATIONS

The following types of vehicle belts **CANNOT BE USED** with your child restraint.

If any of the belt types listed below are in the chosen seating position, you **MUST** choose another seating position or use LATCH/UAS if available.

Please refer to your vehicle owners manual for specific information about seat belts and their use with child restraints.

1. Motorized (Automatic) Vehicle Belts
2. Dual Retractor Lap/Shoulder Belts
3. Non-Locking (ELR) Lap Belts
4. Inflatable Seat Belts
5. Door Mounted Vehicle Belts



## WHAT IS LATCH/UAS?

Most vehicles manufactured after September 1, 2002 are equipped with:

**U.S.: LATCH** (Lower Anchors and Tethers for Children)

**Canada: UAS** (Universal Anchorage System)



Check your vehicle owner's instruction manual to determine LATCH/UAS lower anchor compatible seating positions. Some vehicles owner's manuals use the term "ISOFIX" instead; LATCH/UAS can also be used in vehicle seating positions that are equipped with ISOFIX. Look for the LATCH/UAS symbol that may be visible by the crease of the rear seats.

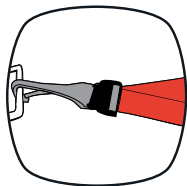
**WARNING: DO NOT** use the LATCH/UAS strap to attach this child restraint rear-facing when restraining a child weighing over 35 lb (15.8 kg) or forward-facing when restraining a child weighing over 40 lb (18 kg).

**DO NOT** install using both LATCH/UAS connectors and the vehicle seat belt at the same time.

# TOP TETHER

## WHAT IS TOP TETHER?

A tether is designed to reduce movement of a rear-facing and forward-facing child restraint in a collision.



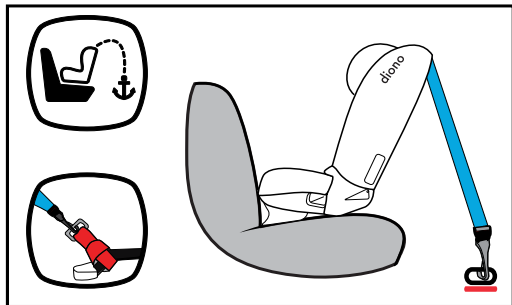
Vehicle tether locations can be found in many locations within the vehicle. Some of the typical locations are shown here. Please refer to your vehicle owner's manual for exact locations, requirements, and anchor identification points.

**WARNING:** Rear-facing top tether connector strap is **ONLY** to be used in rear-facing installations.

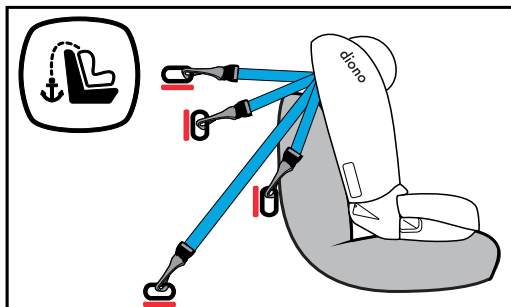
1. Locate the track of vehicle seat that is bolted directly to vehicle frame.
2. Wrap tether connecting strap around the track, and thread metal "D" ring through the loop at the end of the tether connecting strap. Pull strap to form a knot.
3. Now, use metal "D" ring as an anchorage point for top tether metal hook.



## REAR-FACING TOP TETHER INSTALLATION



## FORWARD-FACING TOP TETHER INSTALLATION

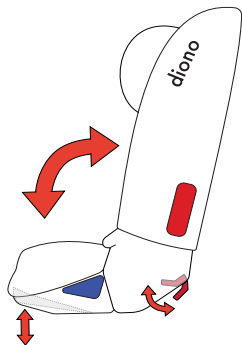


# FIRST SETUP

## UNFOLDING AND FOLDING

1. Place car seat on its back on a flat surface and unfasten red carry strap from the bottom. Be sure the harness adjuster moves freely and is not locked within the bottom of the seat.
2. Rotate bottom until you hear it “click”, this confirms the car seat is locked for use.
3. Pull harness adjusting strap until harness begins to tighten. If it does not tighten freely, check the belt path on the back of the seat bottom is clear from obstruction.
4. Tuck the red strap through the harness slot and store behind the cover.

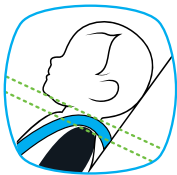
***To fold, push lever shown and secure with red strap.***



## HARNESS SETUP

1. Place your child in the seat. Make sure their back is flat against the car seat back (this can be done in or out of the car). Avoid bulky or heavy clothing because they will prevent the harness straps from being tightened properly at first fitment.
2. Place harness straps over child's shoulders and legs and buckle. You will hear a "click" when buckle tongues are securely attached. Pull up on each buckle tongue to make sure it is securely attached.
3. Be sure the harness straps are at the proper height.

**Rear-Facing:** Harness straps **MUST** be at or just below the child's shoulders. Top of head must be 1.5 in (3.8 cm) below the top of the car seat shell. Child should not be on top of or in front of the buckle.



### REAR-FACING

Harness at or just below shoulders

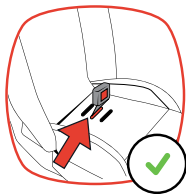
# FIRST SETUP

**Forward-Facing:** Harness straps **MUST** be just above the child's shoulders. Top of child's ears **MUST** be below top of car seat shell.

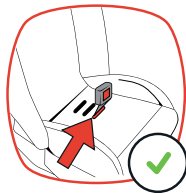


## FORWARD-FACING

Harness just above shoulders



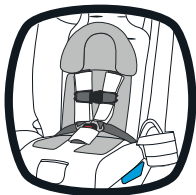
Children **22–30 lb (10–13.6 kg)** **MUST** use the middle buckle slot **ONLY!**



Children above **30 lb (13.6 kg)** **MUST** use the forward most buckle slot **ONLY!**

## INFANT SUPPORT

To ensure a better fit for smaller infants, we recommend using the **infant head and body support cushion** included with your car seat. Use of this cushion is optional and does not affect the safety of the seat.



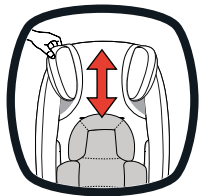
## ADJUSTING THE HEADREST

**IMPORTANT:** When your child fits at the third harness slot, the headrest may now be used at its lowest position.

1. Carefully unfasten the fabric panels by detaching the fabric fasteners located on the upper sides and beneath the headrest.

2. **Position hand as shown, tilt the top of the headrest slightly towards you and slide upwards.**

**NOTE:** You might need two hands.



# FIRST SETUP

## RECLINE LEVEL INDICATOR

Use recline level indicator on car seat to make sure the car seat is at the appropriate angle for your child:

**Infant:** Use from 5-22 lb (2.3-10 kg).

**Toddler:** Use from 40 lb (18 kg) and up.

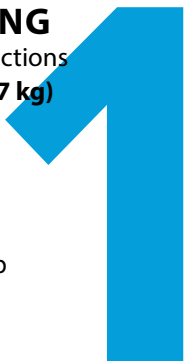
**Level line should fall within weight range noted.**



# REAR-FACING

Installation instructions

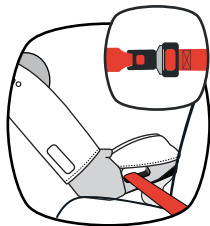
5–50 lb (2.3–22.7 kg)



**LATCH/UAS Strap**



Vehicle **Lap/Shoulder** Belt



Vehicle **Lap** Belt

Install this car seat rear-facing tightly in your vehicle. The car seat should not move at the rear-facing belt path location by more than 1 in (2.5 cm) from side-to-side or front-to-back. If using a lap belt only, refer to your vehicles owners manual for installation advice.

Harness straps **MUST** be at or just below the top of your child's shoulders. Place the chest clip at armpit level.

The American Academy of Pediatrics (AAP), NHTSA, Transport Canada and Diono **RECOMMEND** that children be rear-facing until two years of age or they reach the maximum rear-facing height or weight of their car seat. This car seat can remain rear-facing up to 50 lb (22.7 kg) or 44 in (112 cm) tall.

**ALWAYS** use rear-facing base on rear-facing installs **ONLY**. **DO NOT** use adjustable bottom rear-facing.

**Infants who weigh less than 22 lb (10 kg) and are under one year old, MUST use this car seat rear-facing.**

Place car seat rear-facing in the vehicle back seat.

Make sure LATCH/UAS strap or vehicle seat belt is routed through the rear-facing belt path marked with the blue text and rear-facing illustrations.



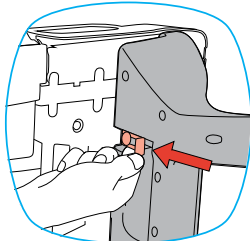
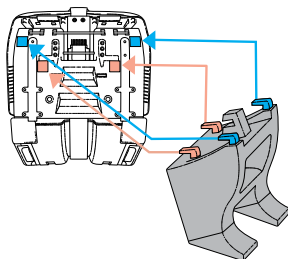
# INSTALL USING LATCH/UAS



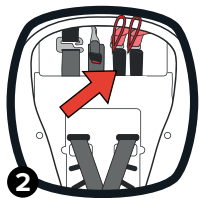
5–35 lb (1.8–15.8 kg)

**DO NOT** install by this method for a child weighing more than 35 lb (15.8 kg). Reinstall with vehicle belt for weights between 35–50 lb (15.8–22.7 kg).

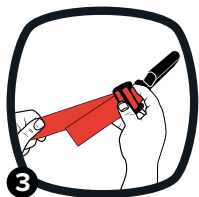
- 1. Install detachable rear-facing base.** Position posts on rear-facing base into slots on bottom of seat, aligning arrows-to-arrows. Slide the base back into place. Press the metal lever to lock base. Confirm base is locked and does not move.



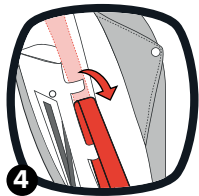
2. **Remove LATCH/UAS strap from storage location on back of seat.** Use LATCH/UAS release on LATCH/UAS connectors and pull up to remove.



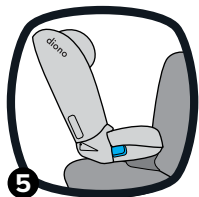
3. **Extend the LATCH/UAS strap.** For easier installation, extend the LATCH/UAS strap to its maximum length by pressing the grey button and pulling on the strap.



4. **From back of seat, unfasten the right side of the cover from seat shell.** Feed LATCH/UAS connectors down, keep under the cover and out the bottom. Once completed, refasten the cover to seat shell.



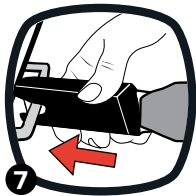
5. **Place car seat rear-facing in back seat of the vehicle.** Center the car seat between the vehicle LATCH/UAS anchors. The entire seat bottom should sit flat on the vehicle seat.



6. **Slide the LATCH/UAS strap through the rear-facing belt path and out the other side.** The LATCH strap should lie flat and not be twisted.



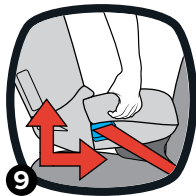
7. **Attach LATCH/UAS connectors to vehicle LATCH/UAS anchors and listen for audible "click" to confirm engagement.**



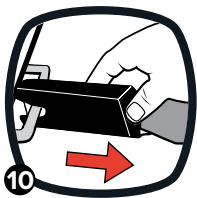
8. **Tighten the LATCH/UAS strap.** Press down firmly in the center of the car seat while tightening the LATCH/UAS strap. You may need to tighten further by pulling upwards in-line at the belt path as shown.



9. **Test for tightness.** Grab the seat at the rear-facing belt path. Try to move the car seat side-to-side and front-to-back with the force of a firm handshake. If the seat moves less than 1 in (2.5 cm), it is tight enough. **DO NOT test by grasping the top or back of the car seat.**



- 10. To remove LATCH/UAS strap from vehicle** — Use LATCH/UAS release on the LATCH/UAS connectors and pull them off the anchor bars.

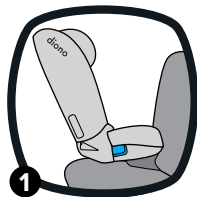


# **INSTALL USING LAP/SHOULDER BELT WITH 5-POINT HARNESS:**



**5–50 lb (2.3–22.7 kg)**

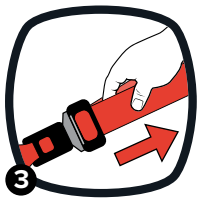
- 1. Place car seat rear-facing in back seat of the vehicle with detachable rear-facing base installed (page 32).** The entire seat bottom should sit flat on the vehicle seat.



- 2. Slide the vehicle seat belt through the rear-facing belt path and out the other side.** Buckle it. The seat belt should lie flat and not be twisted.

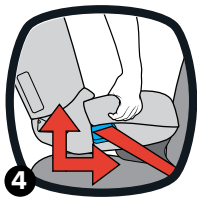


3. **IMPORTANT! Lock your retractor.** Slowly pull the shoulder belt all the way out of the retractor. You will hear a clicking sound as the belt retracts. This is how you know the retractor is locked. For more information on locking your retractor, please review your vehicle owner's manual.

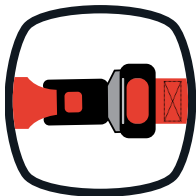


Press down firmly in the center of the car seat. To tighten, pull from the lap/shoulder belt on the side **nearest to the buckle** while feeding the slack back into the retractor.

4. **Test for tightness.** Grab the seat at the rear-facing belt path. Try to move the car seat side-to-side and front-to-back with the force of a firm handshake. If the seat moves less than 1 in (2.5 cm), it is tight enough. **DO NOT test by grasping the top or back of the car seat.**

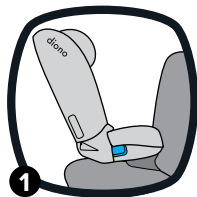


# **INSTALL USING 5-POINT HARNESS WITH LAP BELT:**

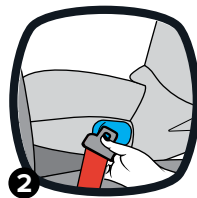


**5–50 lb (2.3–22.7 kg)**

- 1. Place car seat rear-facing in back seat of the vehicle with detachable rear-facing base installed (page 32).** The entire seat bottom should sit flat on the vehicle seat.



- 2. Slide the vehicle seat belt through the rear-facing belt path and out the other side.** Buckle it. The vehicle seat belt should lie flat and not be twisted.



- 3. Tighten the vehicle seat belt.** Press down firmly in the center of the car seat. To tighten, pull on the loose end of the vehicle lap belt.



4. **Test for tightness.** Grab the seat at the rear-facing belt path. Try to move the car seat side-to-side and front-to-back with the force of a firm handshake. If the seat moves less than 1 in (2.5 cm), it is tight enough.

**DO NOT** test by grasping the top or back of the car seat.





# 2

## FORWARD-FACING

Installation instructions  
22–65 lb (10–29.5 kg)

**ALWAYS** Use the top tether.

**DO NOT** place infant in forward-facing restraint until they are at least one year old and weigh 22 lb (10 kg).

Diono recommends keeping children rear-facing until they are at least two years old.

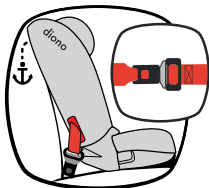
Make sure LATCH/UAS strap or vehicle seat belt is routed through the forward-facing belt path marked with the red text and forward-facing illustrations.



**LATCH/UAS** Strap



Vehicle **Lap/Shoulder** Belt



Vehicle **Lap** Belt

Install this car seat tightly in your vehicle. The car seat should not move at the forward-facing belt path location by more than 1 in (2.5 cm) from side-to-side, front-to-back. If using a lap belt only, refer to your vehicles owners manual for installation advice.

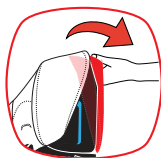
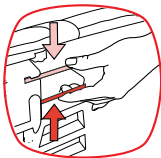
Harness straps **MUST** be above the top of your child's shoulders. Place chest clip at armpit level.

The **American Academy of Pediatrics (AAP)**, **NHTSA**, **Transport Canada** and **Diono** recommend that children be rear-facing until they reach the maximum rear-facing height or weight. This car seat can remain rear-facing up to 50 lb (22.7 kg).

## ADJUSTABLE BOTTOM

**IMPORTANT:** If the child is **OVER 25 LB (11.3 KG)**, lower the adjustable bottom.

Lift the bottom bar up and over the inside channel toward the seat bottom to release. **Confirm locked.**



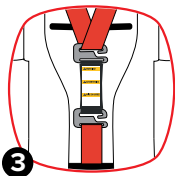
**SAFESTOP™**

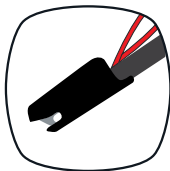
SafeStop is for use **ONLY** in forward-facing installations from 22–40 lb (10–18 kg).

**DO NOT** use rear-facing. **DO NOT** use in booster mode.

**IMPORTANT:** The SafeStop will need to be removed once the child reaches 40 lb (18 kg).

- 1. Detach SafeStop from back of seat.**
- 2. Remove harness straps from metal plate.** Detach harness from metal plate on back of seat. Once detached, thread both harness straps onto the metal hook of the SafeStop. Connect left side of harness first, then follow with the right.
- 3. Thread bottom of SafeStop onto the harness strap hook.** Check to ensure proper engagement to the metal plate. Take care to ensure harness straps are not twisted and are clear from any obstructions.

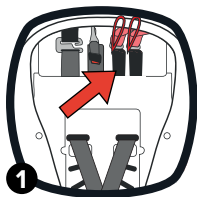


**INSTALL USING LATCH/UAS:****22–40 lb (10–18 kg)**

**DO NOT** install by this method for a child weighing **more than 40 lb (18 kg)**. Reinstall with lap/shoulder belt for weights between 40–65 lb (18–29.5 kg).

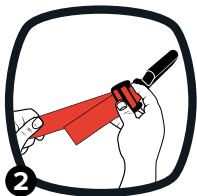
- 1. Remove LATCH/UAS strap from storage location on back of seat.**

Use LATCH/UAS release on the LATCH/UAS connectors to remove.

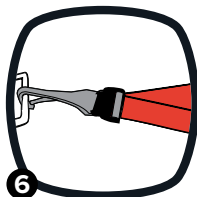
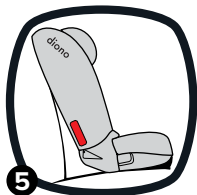
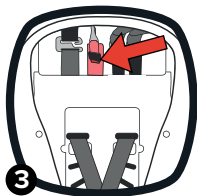


- 2. Extend the LATCH/UAS strap.**

For easier installation, extend the LATCH/UAS strap to its maximum length by pressing the grey button and pulling on the strap.



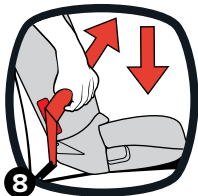
3. **Unhook and remove top tether strap from storage location on back of seat.**
4. **Feed LATCH/UAS connectors into forward-facing belt path.**  
The LATCH/UAS connectors are easier to feed through by routing behind cover.
5. **Place car seat forward-facing in back seat of the vehicle.** Center the car seat between the vehicle LATCH/UAS anchors. The entire seat bottom should sit flat on the vehicle seat.
6. **Loosely attach tether strap.**  
Do not tighten. Consult vehicle's owner manual for specific location.



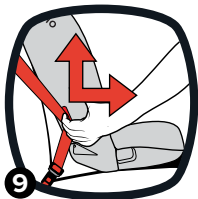
7. **Attach LATCH/UAS connectors to vehicle's LATCH/UAS anchors and listen for audible "click" to confirm engagement.** LATCH/UAS strap should lie flat and not be twisted.



8. **Tighten the LATCH/UAS strap.** Press down firmly in the center of the car seat while tightening the LATCH/UAS strap. You may need to tighten through the opening in the cover by the belt path shown, by pulling it through and up.

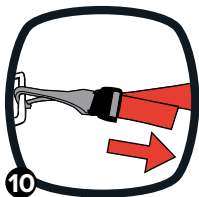


9. **Test for tightness.** Grab the seat at the forward-facing belt path. Try to move the car seat side-to-side and front-to-back with the force of a firm handshake. If the seat moves less than 1 in (2.5 cm), it is tight enough. **DO NOT test by grasping the top or back of the car seat.**

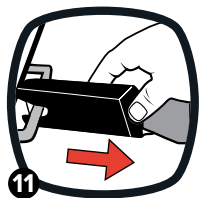


**10. Tighten the top tether strap.**

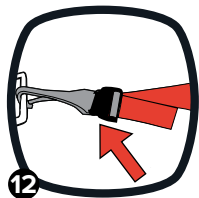
Push the car seat back while tightening the tether strap to remove all the slack.



- 11. To remove LATCH/UAS strap from vehicle,** use LATCH/UAS release on the LATCH/UAS connectors and pull them off the anchor bars.



- 12. To loosen or remove the top tether,** push in on the grey button to loosen, then unclip the top tether.



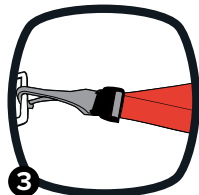
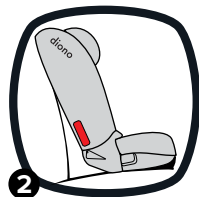
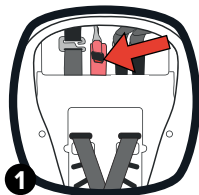


## INSTALL USING LAP/SHOULDER BELT WITH 5-POINT HARNESS :



22–65 lb (10–29.5 kg)

- 1. Unhook and remove top tether from storage location on back of seat.**
- 2. Place car seat forward-facing in back seat of the vehicle.** The entire seat bottom should sit as flat as possible on the vehicle seat.
- 3. Loosely attach top tether strap.** Do not tighten. Consult vehicle's owner manual for specific location.

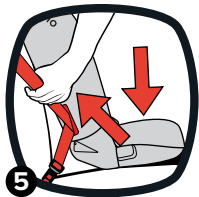


4. **Slide the vehicle seat belt through the forward-facing belt path and out the other side.**

Buckle it. The seat belt should lie as flat as possible and not be twisted.

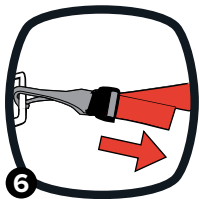


5. **IMPORTANT! Lock your retractor.** Slowly pull the shoulder belt all the way out of the retractor. You will hear a clicking sound as the belt retracts. This is how you know the retractor is locked. For more information on locking your retractor, please review your vehicle owner's manual.



Press down firmly in the center of the car seat. To tighten, pull from the lap/shoulder belt on the side **nearest to the buckle** while feeding the slack back into the retractor.

6. **Tighten the top tether strap.** Push the car seat back while tightening the tether strap to remove all the slack.



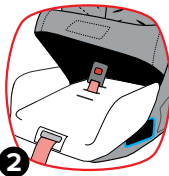
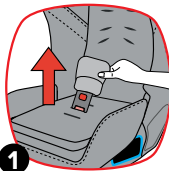
9. **Test for tightness.** Grab the seat at the forward-facing belt path. Try to move the car seat side-to-side and front-to-back with the force of a firm handshake. If the seat moves less than 1 in (2.5 cm), it is tight enough. **DO NOT test by grasping the top or back of the car seat.**



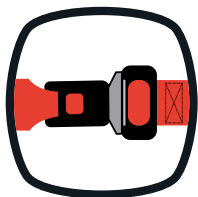
## LAP BELT CUSHION

For forward-facing installations using a **LAP BELT ONLY** with **NO** top tether available from 22–65 lb (10–29.5 kg). **DO NOT** USE REAR-FACING.

1. **Remove the center buckle pad** by pulling it carefully up and over the buckle.
2. **Unclip seat cover from seat bottom.** Lift seat cover away from the seat bottom and remove the buckle.
3. Place lap belt cushion on seat bottom, and **slide the buckle through the slot in the cushion** that matches the slot position being used on the seat.
4. Guide buckle through seat cover bottom and memory foam cushion. Reattach cover to seat bottom.
5. Reinstall the center buckle pad.  
**Should you need a longer buckle, these are available by calling Customer Care.**



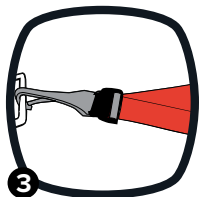
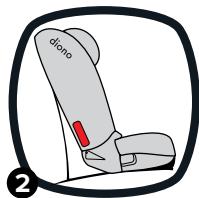
# INSTALL USING LAP BELT WITH 5-POINT HARNESS:



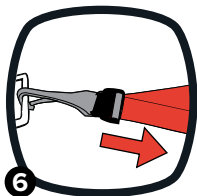
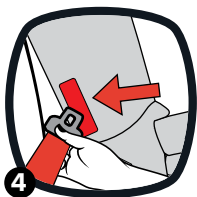
22–65 lb (10–29.5 kg)

**IMPORTANT:** For harnessed forward-facing installations using a LAP BELT ONLY with NO top tether anchor point available, you **MUST** install the Diono lap belt cushion.

1. **Unhook and remove top tether** from storage location on back of seat.
2. **Place car seat forward-facing in back seat of the vehicle.** The entire seat bottom should sit flat on the vehicle seat.
3. **Loosely attach top tether strap.** Do not tighten. Consult vehicle's owner manual for specific location.



4. **Slide the vehicle seat belt through the forward-facing belt path and out the other side.**  
Buckle it. The seat belt should lie as flat as possible and not be twisted.
5. **Tighten the vehicle seat belt.**  
Press down firmly in the center of the car seat. To tighten, pull on the loose end of the vehicle lap belt to tighten it.
6. **Tighten the top tether strap.**  
Push the car seat back while tightening the tether strap to remove all the slack.
9. **Test for tightness.** Grab the seat at the forward-facing belt path. Try to move the car seat side-to-side and front-to-back with the force of a firm handshake. If the seat moves less than 1 in (2.5 cm), it is tight enough. **DO NOT test by grasping the top or back of the car seat.**





# 3

## BOOSTER MODE

Installation instructions  
40–120 lb (18–54 kg)



**WARNING!** Use **ONLY** the vehicle lap/shoulder belt system when restraining the child in this booster seat.

**DO NOT** USE A LAP BELT ONLY!



**WARNING:** Make sure the vehicle seat belt can properly retract before each use.

**ALWAYS** secure the child restraint using the vehicle belt or LATCH/UAS connectors even when it is unoccupied. It could injure other occupants in a sudden stop or collision.

**NOTE:** The 5-Point harness **MUST** be removed to use this seat in booster mode.

1. Place child in car seat with their back flat against the back of the seat.
2. Feed the shoulder belt of the vehicle seat belt through the upper belt guide and over booster seat.
3. Buckle the vehicle lap/shoulder belt. Be sure the shoulder belt lays across your child's shoulders, between the neck and edge of the shoulder. Be sure the lap portion of the vehicle seat belt goes under the lower booster belt guide and the belt lays low across your child's hips. The shoulder belt should lay under the lower booster belt guide on the side where it is buckled.

## CHANGING HARNESS POSITION

1. Loosen the harness straps. Push down on the harness adjuster while pulling out on the harness straps at the chest clip. Unbuckle the chest clip. Detach the buckle tongues from the buckle.
2. Detach harness straps from metal plate on back of seat. Pull each harness through to the front of the seat. Relocate each harness to the correct slot determined, push through to the back of the seat taking care to keep each harness strap flat. Re-secure the harness straps to the metal plate. Check to ensure harness loops are properly secured to the metal plate.
3. Check the buckle position. When rear-facing, the correct slot is the one that is closest to your child without being underneath your child. When forward-facing, children 22–30 lb (10–13.6 kg) **MUST** use the middle buckle slot only. Children above 30 lb (13.6 kg) **MUST** use the forward most buckle slot only.
4. To adjust buckle strap — Remove all lower seat cover clips from the seat shell. Reach into the rear-facing belt path. You will feel the buckle strap metal retainer.
5. Rotate metal retainer and insert it up through the shell and pad. From the top of the car seat, pull the buckle strap out.

## CHANGING HARNESS POSITION

6. Insert metal retainer in the new buckle slot position. Reach underneath the car seat and pull the metal retainer through.

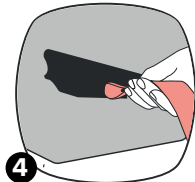
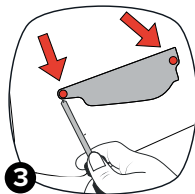
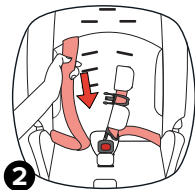
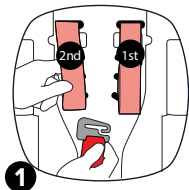
### SECURING YOUR CHILD

1. Pull up on buckle strap to make sure it is secured.
2. Pull all the slack out from around the waist. Pull up on the harness strap while pushing the chest clip down. Do this to both sides.
3. Tighten the harness by pulling the harness adjustment strap. When you are not able to pinch any of the harness webbing at your child's shoulder, the harness is tight enough. A snug harness should not allow any slack. It lies in a relatively straight line without sagging. It does not press on the child's flesh or push the child's body into an unnatural position.
4. Buckle the chest clip. You will hear a "click" when the chest clip is securely buckled.
5. Place the chest clip at armpit level.



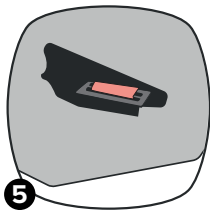
# HARNESS STRAP REMOVE/REPLACE

1. **Remove harness straps from the metal hook on back of seat.**
2. **Pull the harness straps out from the back of the seat.** Remove the harness pads and chest clip from each side. Slide the harness strap out of the buckle tongues.
3. **Using a Phillips head screwdriver, take out the screws and remove the access panel.** Remove old harness straps from each side of the seat.
4. **Insert new harness strap through the slot and pull the strap up.**



## HARNESS STRAP REMOVE/REPLACE

5. **Once the strap is pulled up until the metal “D” ring is located as shown, re-fasten and close the access panel.**
6. Slide the new harness straps through the buckle tongues, re-attach the chest clip and reinstall the harness pads.
7. Slide the harness straps through to the back of the seat and re-install them to the metal hook in Step 1.



# AIRCRAFT INSTALLATION

## REAR-FACING INSTALLATION

1. Adjust the seat belt buckle to its shortest length to ensure the buckle is accessible for release.
2. Ask the flight attendant for a “seat belt extender” and then use this extender to adjust the seat belt length.
3. Following the instructions in rear-facing installation section for use with a lap belt to complete.

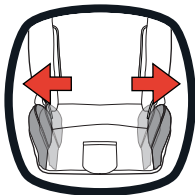


## FORWARD-FACING INSTALLATION

Follow the instructions in the forward-facing installation section for use with a lap belt.

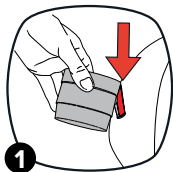
## EXPANDABLE SIDE WINGS

The side wings can be adjusted for comfort as shown. These will not impact the safety of the car seat in any manner. Simply push the side wings outward as shown to extend.



## CUP HOLDER

1. To attach your cup holder, locate the cup holder icon on seat cover on either side of the seat. **Insert the cup holder into the slot in the seat.**
2. **Push down to engage the cup holder into the slot and twist to secure.**



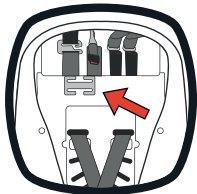
**CAUTION: DO NOT** use with hot liquids as this could burn a child.

# BELT LOCKING CLIP

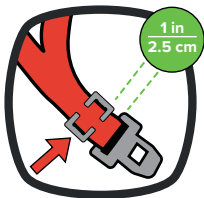
**WARNING:** If your vehicle lap/shoulder belt is equipped with ELR (Emergency Locking Retractor) that does not switch to function as an ALR (Automatic Locking Retractor), you **MUST** use a locking clip to secure lap portion of vehicle seat belt. If you have any questions, please consult your vehicle owner's manual or contact the vehicle manufacturer.

**1. Remove lock clip from back of seat.**

**2. Route the vehicle seat belt through the proper belt path and buckle it in.** While pushing down on seat, pin the two straps together behind the buckle tongue. Unbuckle the belt without allowing it to slip.



**3. Attach locking clip to lap/shoulder belt as shown.** Rebuckle belt. Check that lap belt does not move by pulling hard. If belt loosens or lengthens, repeat procedure.





**CLEANING FABRICS:** Seat pad, harness pads, infant support pad, buckle pad and shoulder pads.

**REMOVE** foam insert from seat pad prior to washing.  
**DO NOT** wash foam.

Machine wash fabrics in cold water on gentle cycle with mild detergent. Dry flat and away from direct sunlight before re-use or storage. **DO NOT** bleach, iron or dry clean.



**CLEANING HARNESS AND BUCKLE STRAPS:** Spot clean using warm water with mild detergent. Air dry completely before re-use or storage. **DO NOT** bleach or iron.



## CARE & MAINTENANCE

**CLEANING PLASTICS:** Spot clean using warm water with mild detergent. Towel dry completely before re-use or storage. **DO NOT bleach.**



### CLEANING BUCKLE, SEAT FRAME AND LOWER ANCHOR CONNECTOR HARDWARE

**NOTE:** Buckle should fasten with a “click” if not, rinse under warm running water. Towel dry completely before re-use or storage. **DO NOT use detergents or lubricants.**

As a part of this Diono Warranty Policy (Policy), Diono, L.L.C. dba Diono, a Washington limited liability company (Diono U.S.A.), and its foreign-related companies, Diono ULC, a Canadian unlimited liability company (Diono Canada), Diono Ltd. a United Kingdom limited company (Diono U.K.), and Diono GmbH, a German company with limited liability (Diono E.U.) (Diono U.S.A., Diono Canada, Diono U.K., and Diono E.U. shall be collectively referred to herein as Diono), warrants its products, namely its car seats, strollers, baby carriers, and accessories thereto (collectively, the Products) to their non-merchant original retail Product purchasers (collectively, the Purchasers) as follows:

## 1. REGISTRATION

To qualify for the warranties detailed in this Policy, Diono instructs all Purchasers to complete the online Product Registration form and mail the owner registration card included in the Product Purchase to Diono within (30) days of purchase. Failing to take such actions may prevent a Purchaser from qualify for the warranties detailed in this Policy. For more information about Product registration, Purchasers are recommended to refer to their Product's Product Manual, the Diono Instruction Manual, and/or contact Diono as provided in Section 9 of this Policy. Such registration requirements detailed in this subsection of the Policy do not apply to warranties provided by Diono E.U. as detailed in Section 2.4 below.

## 2. GENERAL WARRANTY PERIOD

**2.1 General U.S. Warranty Period.** Diono U.S.A. warrants to Purchasers that its Products will be free from defects in material and workmanship for one (1) year from the date of original purchase (the U.S. Warranty Period). During the U.S. Warranty Period, Diono U.S.A. will, at its option, repair or replace a Product if it is found by Diono U.S.A. to be defective in material or workmanship.

**2.2 General Canadian Warranty Period.** Diono Canada warrants to Purchasers that its Products will be free from defects in material and workmanship for one (1) year from the date of original purchase (the Canadian Warranty Period). During the Canadian Warranty Period, Diono Canada will, at its option, repair or replace a Product if it is found by Diono Canada to be defective in material or workmanship.

**2.3 General U.K. Warranty Period.** Diono U.K. warrants to Purchasers that its Products will be free from defects in material and workmanship for one (1) year from the date of original purchase (the U.K. Warranty Period). During the U.K. Warranty Period, Diono U.K. will, at its option, repair or replace a Product if it is found by Diono U.K. to be defective in material or workmanship.

**2.4 General European Warranty Period.** Diono E.U. warrants to Purchaser that its Products are in conformity with their original contracts of sale (collectively, the Contracts), and notably will be free from defects in material and workmanship at the time the Products were delivered to Purchaser, for two (2) years from the date of original purchase (the European Warranty Period). The Products are presumed to be in conformity with the Contract if they are fit for the purposes for which products of the same type are normally used, or show the quality and performance which are normal in products of the same type and which Purchaser can reasonably expect, given the nature of the Products and taking into account any public statements on the specific characteristics of the goods made about them by Diono, particularly in advertising or on labelling. Purchaser must inform Diono E.U. of the Lack of Conformity within a period of two (2) months from the date on which Purchaser detected such lack of conformity discovery. There shall be deemed to not be a Lack of Conformity at the time the Contract was concluded when Purchaser was aware, or could not reasonably be unaware, of the Lack of Conformity. During the European Warranty Period, Diono E.U. will, at the Purchaser's option, repair or replace a Product free of charge, within a reasonable time and without any significant

# WARRANTY

inconvenience to the Purchaser, if it is found by Diono E.U. to be defective in material or workmanship respectively, unless this is impossible or disproportionately burdensome. When repair or replacement of a Product are impossible or disproportionately burdensome, the Purchaser may request a refund of the Product or a reduction of its price in proportion to the degree of non-conformity of the said Product, otherwise in accordance with the Diono Return Policy.

## 3. EXTENDED EXPRESS WARRANTIES

**3.1 Qualifications.** Diono warrants to Purchasers an extended warranty (Extended Warranty) for certain Products, namely (a) 2020 model year strollers and car seats (namely, Radian R and Q, Monterey, Cambria, Everett and Solana, and strollers (Flexa and Excursion)), and (b) Diono Canada car seats and strollers (collectively, Extended Warranty Products) that will be free from defects in material and workmanship for a period of two (2) years after the general warranty periods detailed in Section 2 of this Policy (the Extended Warranty Period) has expired, provided that: (i) such Extended Warranty Product(s) were purchased new from the Website; (ii) its Purchasers have fully registered their Extended Warranty Products on the Website within two (2) months of purchase; and (iii) An original receipt of purchase for such Extended Warranty Product(s) are provided to Diono for verification. This Extended Warranty applies only in the U.S.A., the U.K. and Germany. During the Extended Warranty Period, Diono will, at its option, repair or replace a qualifying Extended Warranty Product if it is found by Diono to be defective in material or workmanship.

**3.2 Extended Warranty Limitations.** It is expressly agreed that Diono's obligations and the Purchaser's remedies under the limited extended warranty contained herein are exclusive and are strictly limited to the repair or replacement of the Extended Warranty Product. This limited extended warranty is conditional upon strict compliance with the provisions of the Instruction Manual for the Extended Warranty Product(s) in question. In no event will Diono be liable to Purchaser for any damages, including incidental or consequential damages, arising out of the use or inability to use any Extended Warranty Product.

## 4. IMPLIED WARRANTIES

Any implied warranties applied to a Product, including without limitation implied warranties of merchantability and fitness for a particular purpose, shall be limited to the duration and terms of the express written warranties detailed in this Policy. Such warranties give Purchasers specific legal rights, which vary from jurisdiction-to-jurisdiction. Some U.S. states and Canadian provinces do not allow limitations on how long an implied warranty lasts or the exclusion or limitation of incidental or consequential damages. As such, such implied warranty limitations may not apply. Notwithstanding, neither Diono, nor any retailer selling any Product, authorizes any person to create for it any other warranty, obligation, or liability in connection with any Product not otherwise detailed in this Policy.

## 5. WARRANTY LIMITATIONS

**5.1 Damage Limitations.** The warranties identified in this Policy do not cover: (a) any Product purchased from a non-authorized Diono retailer; (b) the effects of normal wear and tear on a Product; (c) damage arising from Product repairs or modifications carried out by a third party; (d) a Product's involvement in an accident; (e) dissatisfaction with a Product's fit, weight, functionality, color or style; (f) Product damage resulting from negligence, modification, improper installation, accident, transport damage, incorrect washing of covers, corrosion, rust, mold, insufficient maintenance, misuse or abuse ; or (g) any Product defect that originated from material or design supplied by the Purchaser.

**5.2 Remedy Limitations.** It is expressly agreed that Diono's obligations and a Purchaser's remedies under the limited warranties provided in this Policy are exclusive and are strictly limited to the repair or replacement of a Product unless as otherwise detailed in Section 2 of this Policy. Such limited warranties are also conditional upon strict compliance with the provisions of the Instruction Manual for the Product(s) in question. In no event will Diono or any of their authorized manufacturers or retailers be liable to a Purchaser for any damages, including without limitation incidental or consequential damages, arising out of a Purchaser's use or inability to use any Product.

**5.3 Other Requirements and Limitations.** The warranties detailed in this Policy: (a) are non-transferable by Purchaser; (b) are only valid when supplied with proof of purchase from an authorized retailer or the Website; and (c) are valid only in the original country of the Product's purchase.

## 6. USE OF OUTSIDE PARTS AND ACCESSORIES

The use of covers, inserts, toys, accessories, or tightening devices produced by parties other than Diono or its authorized manufacturers (collectively, Outside Products) in any Product is not approved by Diono. The use of any Outside Product in conjunction with a Product could cause the Product to fail U.S., Canadian, U.K., and/or European safety standards. As a result, use of any Outside Product with a Product automatically voids any warranties granted under this Policy.

## 7. RESERVED RIGHTS

Diono reserves the right to: (a) discontinue any Product; (b) change a Product's parts, fabrics, or design; (c) substitute a Product with a comparable model or Product; or (d) apply a divergent manufacturer's guarantee for a Product in any specific geographical region.

## 8. SHIPPING CHARGES

Shipping charges for the replacement of any Product pursuant to a warranty granted under this Policy will be Purchaser's sole responsibility. Diono will not be responsible for any delays or damage caused by the shipment of a replacement Product. More information about Diono's shipping policies can be found in the Diono Shipping Policy.

## 9. QUESTIONS

Should any Purchaser have issues concerning a warranty or this Policy, Diono recommends contacting Diono Customer Service at 855-463-4666 (8:00 am to 3:00 pm PST) or [support@diono.zendesk.com](mailto:support@diono.zendesk.com) for help or assistance.