



## Radian® SafePlus™ Series

Radian® 3R® SafePlus™

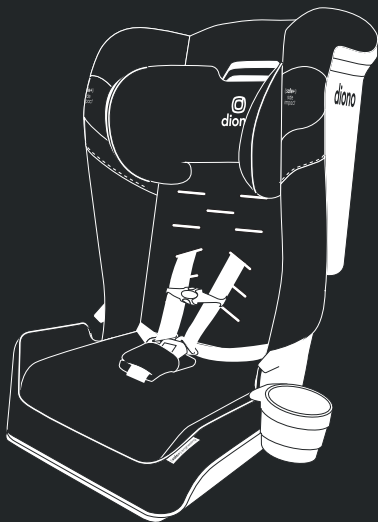
Radian® 3RXT® SafePlus™

Radian® 3RXT® SafePlus™ Max

### Car Seat Instructional Manual

All-In-One Convertible

4-120 lb (1.8-54 kg)



**READ INSTRUCTION MANUAL**  
before using this car seat

## WE LOVE TO HELP

**Hello there, welcome to the Diono® family!** We've created this lovingly engineered car seat to help keep your child comfortable and safe with all of the goods and none of the gimmicks.

**This Radian® SafePlus™ Series Manual is an all-inclusive instructional manual for the following models: Radian® 3R® SafePlus™, Radian® 3RXT® SafePlus™ and the Radian® 3RXT® SafePlus™ Max.** Please refer to the clearly marked sections of this manual for instructional use on items that are applicable to the model you have purchased.

The Radian® SafePlus™ Series allows for interchangeable accessory parts. These parts are available for purchase at [Diono.com](http://Diono.com) or by calling customer service. ***We look forward to lending a helping hand each and every day.***



**Any questions?**

**Diono U.S.: 1-855-463-4666**

**Diono Canada: 1-866-954-9786**

Diono® is proud to be Made of Seattle®, a city known for its pioneering spirit. We were born from a commitment to innovation and safety that began in 1999. Seattle's unique culture inspired us then, and continues to drive us today as we design revolutionary products that protect growing families and solve the challenges of a busy backseat.

Our passion for problem-solving has inspired us to create several groundbreaking industry firsts: Radian®, the original 3-across all-in-one convertible car seat; Monterey®, the original expandable booster seat; and now Connect3®, the first and only booster that fits 3-across.

Our dedication to world-class engineering and technical innovation means that whether you're on the road, out for a walk, or on-the-go with Diono, you can trust us to keep your family safe. We are honored that parents have been trusting us with their most precious cargo for over 25 years.

Today, over a million children travel safely in a Diono car seat every day. We're here to help you unlock the #JoyOfTheJourney, every step of the way.



# CONTENTS

<b>REGISTER THIS CAR SEAT</b>	<b>7</b>
<b>Car Seat Use After Collision</b>	<b>8-9</b>
<b>Warning</b>	<b>10-16</b>
Expiration	
Safe Practices	
Safe Use Checklist	
Certification	
<b>Parts</b>	<b>17-19</b>
<b>Vehicle Seating Locations</b>	<b>20</b>
<b>LATCH/UAS</b>	<b>21-23</b>
<b>Vehicle Seat Belt Types</b>	<b>24-29</b>
Latch Plates	
Retractors	
<i>Switching the Retractor from (ELR) to (ALR) Mode</i>	
Belt Locking Clip*	
<b>First Setup</b>	<b>30-41</b>
A. Unfolding Car Seat	
B. Harness Strap Placement	
C. Buckle Slot Placement	

# CONTENTS

- D. Changing Harness Position
- E. Buckle Strap Slot Change
- F. Adjusting Headrest
- G. Anti-Rebound Panel (ARP)\*
- H. Side Impact Management Pod\*

## REAR-FACING INSTALLATION

42-53

Anti-Rebound Bar (ARB)\*

Recline Level Indicator Line

Detachable Rear-Facing Base

Seat Bight

Comfort Insert\*

LATCH/UAS Installation

Lap/Shoulder Belt Installation

Lap Belt Installation

## FORWARD-FACING INSTALLATION

54-70

SafeStop™

Adjustable Bottom

Top Tether

80/20 Overhang Guidance

LATCH/UAS Installation

# CONTENTS

Lap/Shoulder Belt Installation	
Lap Belt Installation	
Lap Belt Cushion	
<b>Securing Child</b>	<b>71-73</b>
<b>BOOSTER MODE INSTALLATION</b>	<b>74-77</b>
<b>Aircraft Installation</b>	<b>78</b>
<b>Features</b>	<b>79-80</b>
Cup Holder	
Expandable Side Wings	
<b>Harness Strap Removal and Installation</b>	<b>81-84</b>
<b>Folding Car Seat</b>	<b>85-86</b>
<b>Cover</b>	<b>87-98</b>
Diono® Cover Assistant Cover Tool	
Car Seat Cover Removal and Installation	
Anti-Rebound Panel Cover*	
<b>Care and maintenance</b>	<b>99-100</b>
<b>Warranty</b>	<b>101-103</b>

**\* ONLY INCLUDED WITH SELECT MODELS**

## REGISTER THIS CAR SEAT

Please take a few moments to promptly fill out and return the attached card or register online using the direct link to the manufacturer's registration website provided.

Child restraints could be recalled for safety reasons. You must register this restraint to be reached in a recall. Send your name, address, e-mail address if available, and the restraint's model number and manufacturing date to:

**Diono U.S., PO Box 77129, Seattle, WA 98177** or call 1-855-463-4666 or register online at: <http://www.diono.com/product-registration/>



U.S.

For recall information, call the U.S. Government's Vehicle Safety Hotline at 1-888-327-4236 (TTY: 1-800-424-9153), or go to <http://www.NHTSA.gov>.

**Diono Canada ULC, 2139 Wyecroft Rd, Oakville, ON L6L 5L7** or call 1-866-954-9786 or register online at: <http://www.diono.ca/product-registration/>



Canada

For future reference, in the case of a change of address, please take a moment to fill out the following information:

**Model Number:**

**Manufacture Date:**

This information can be found either on the registration card or on the manufacturing label located on the seat.

# CAR SEAT USE AFTER A COLLISION

## UNITED STATES

The U.S. National Highway Traffic Safety Administration (NHTSA) recommends that car seats be replaced following a **MODERATE** or **SEVERE** collision in order to ensure a continued high level of collision protection for child passengers. In the U.S., car seats do not automatically need to be replaced following a **MINOR** collision.

**NHTSA defines a MINOR crash as one in which ALL of the following apply:**

- The vehicle was able to be driven away from the crash site.
- The vehicle door nearest the car seat was not damaged.
- None of the passengers in the vehicle sustained any injuries in the crash.
- If the vehicle has air bags, the air bags did not deploy during the crash; **and**
- There is no visible damage to the car seat.

**NEVER** use a car seat that has been involved in a **MODERATE** or **SEVERE** collision.



# CAR SEAT USE AFTER A COLLISION

## CANADA

- **DO NOT USE THIS CHILD RESTRAINT SYSTEM IF IT HAS BEEN IN A VEHICLE ACCIDENT.**
- **Diono® designates that you MUST replace this child restraint if it has been involved in a collision.**
- You must dispose of your child seat or booster seat if the child seat was in a vehicle during a crash. Even if the child seat was empty or was not directly hit, it may be damaged.
- You must dispose of your child seat or booster seat if the shell is cracked or the webbing of the child car seat is frayed, torn or discolored.



**!WARNING! DEATH OR SERIOUS INJURY CAN OCCUR!**



**WARNING – failure to follow these instructions and the product labels can result in serious injury or death to your child.**

- ▶ **Your child's safety depends on you. Death or Serious Injury can occur.**
- ▶ No child restraint can guarantee protection from injury in every situation, but proper use helps to reduce the risk of serious injury or death.
- ▶ Carefully read and understand all instructions and warnings in this manual. Your child's safety depends on you knowing how to set up, install and use this child restraint properly.
- ▶ Choose the correct mode of use for your child, depending on their weight and height, and state regulated ages.
- ▶ This child restraint is designed for use only with children who weigh 4–120 lb (1.8–54 kg) and whose height is 57 in (144 cm).
- ▶ **Infants who weigh less than 26.5 lb (12 kg) or are under one year old, MUST use this child restraint rear-facing.**



**!WARNING! DEATH OR SERIOUS INJURY CAN OCCUR!**



- ▶ For newborn infants, you must consult the infant's doctor before using this child restraint. A newborn infant may have difficulty breathing or have other medical problems when placed in a seated position.
- ▶ ***Before installing this child restraint in a vehicle, be sure to also check the vehicle owner's manual for information on proper installation.***
- ▶ Check all installation configurations before discarding the box. Diono® cannot guarantee proper fit in all vehicles.
- ▶ Diono® **recommends** that you install this child restraint in the back seat. The back seat is the safest place for children 12 and under.
- ▶ **IMPORTANT:** The child is too tall for the car seat if seating forward-facing and the tops of the ears are above the back of the car seat, the shoulders touch the bottom of the adjustable headrest when it's set at the highest position, or if the child is more than 57 in (144 cm) tall.



**!WARNING! DEATH OR SERIOUS INJURY CAN OCCUR!**



**Never place this child restraint rear-facing in a vehicle seating location with an active front air bag. Death or serious injury may occur.** If an air bag inflates, it can hit the child or child restraint with enough force to cause serious injury or death to your child. For vehicles with side passenger air bags, refer to your vehicle owner's manual for information on your child restraint installation.

- ▶ Take care to secure the child properly. Snugly adjust the harness straps provided with this child restraint around your child. A snug strap should not allow any slack. It lies in a relatively straight line without sagging. It does not press on the child's flesh or push the child's body into an unnatural position.

## EXPIRATION

- **DO NOT** use child restraint if any part is damaged or broken, expired ten years from date of purchase, missing instructions, missing parts, or if the straps are cut, frayed, or damaged in any way. For any questions or concerns or to find out if the damaged part(s) can be replaced, contact Diono® at:

**Diono® U.S.: 1-855-463-4666**

**Diono® Canada: 1-866-954-9786**



**!WARNING! DEATH OR SERIOUS INJURY CAN OCCUR!**



## SAFE PRACTICES

- **DO NOT** leave loose objects, such as books, bags, etc., in the back of the vehicle. In the event of a sharp turn, sudden stop, or collision, loose objects can be thrown around and possibly cause serious injury to vehicle occupants.
- **ALWAYS** check all surfaces of restraint before securing your child. In warm weather, child restraints can become very hot. Do not allow children to play with vehicle seat belts.
- **DO NOT** use any accessories, inserts or products not included with this child restraint, unless approved by Diono®. Items not tested with this child restraint could injure your child.
- **NEVER** remove harness from child restraint without following the proper removal and installation instructions.
- **DO NOT** use child restraint without seat cover installed.
- **ALWAYS** check seat belt or LATCH/UAS connectors to ensure all buckles are securely latched.



**!WARNING! DEATH OR SERIOUS INJURY CAN OCCUR!**



- **NEVER** leave a child unattended. Do not allow children to play in or around the child restraint. Child may become tangled in harness straps and suffocate or strangle.
- **ALWAYS** secure your child in the harness while using the child restraint for rear and forward-facing installations.
- **DO NOT** use child restraint in any configuration not shown in the instructions.
- **DO NOT** modify your child restraint.
- **NEVER** install in a rear-facing or side-facing vehicle seat or on the back of a folded down vehicle seat.
- **ALWAYS** secure this child restraint with the vehicle's child restraint anchorage system (LATCH/UAS) if available OR the vehicle seat belt. In a crash an unsecured child restraint system may injure other occupants.
- **NEVER** use the restraint system in a vehicle seating position where it cannot be secured tightly. A loosely installed restraint system will not protect your child in a collision.



**!WARNING! DEATH OR SERIOUS INJURY CAN OCCUR!**



- **DO NOT** use the LATCH/UAS system to attach this child restraint rear-facing when restraining a child weighing more than 35 lb (15.8 kg) or forward-facing when restraining a child weighing more than 40 lb (18 kg).

## CERTIFICATION



This child restraint system conforms to all applicable requirements of U.S Federal Motor Vehicle Safety Standards (FMVSS) 213 and Canada Motor Vehicle Safety Standards (CMVSS) 213, 213.1, 213.2.



This child restraint is certified for use in aircraft only when in harness mode.



This child restraint is not certified for use in aircraft when used in booster mode. Aircraft seats do not have shoulder belts which are required for use with this booster.

Diono® and the US Federal Aviation Administration (FAA) strongly urge you to secure your child in a child restraint system (CRS) or device for the duration of your flight. Please contact the airline for their specific policies.



**!WARNING! DEATH OR SERIOUS INJURY CAN OCCUR!**



## SAFE USE CHECKLIST

- ✓ Choose a suitable seating location and the proper belt path for this car seat in your vehicle.
- ✓ Review your vehicle seating locations.
- ✓ Install this car seat tightly in your vehicle.
- ✓ Secure harness snug and flat around your child.

### REAR-FACING SECTION *Page 42*

#### 4–50 lb (1.8–22.7 kg) and whose height is 18-44 in (46-112 cm).

- Harness straps **MUST** be at or just below the child's shoulders. The top of the head must be at least 1.5 in (3.8 cm) below the top of the car seat shell.

### FORWARD-FACING SECTION *Page 55*

#### 26.5–65 lb (12–29.5 kg) and whose height is 30-57 in (76-145 cm).

- Harness straps **MUST** be above the child's shoulders. The top of the child's ears **MUST** be below top of car seat shell.

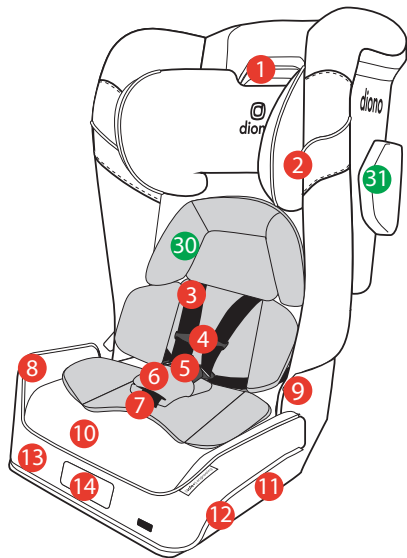
### BOOSTER MODE SECTION *Page 74*

#### 40–120 lb (18–54 kg) and whose height is 40-57 in (101-145 cm).

- Child **MUST** be secured using **ONLY** the vehicle lap/shoulder belt. The child **MUST** weigh at least 40 lb (18 kg), with shoulders positioned at or above the 4th slot and remain properly seated for the entire ride.



## PARTS



1. Headrest Height Adjuster

2. Shoulder Belt Guide

3. Harness Straps

4. Chest Clip

5. Buckle

6. Buckle Pad

7. Buckle Strap

8. Expandable Side Wings

9. Lap Belt Guide

10. Memory Foam Cushion

**Located under the seat cover.**

11. Rear-Facing Belt Path

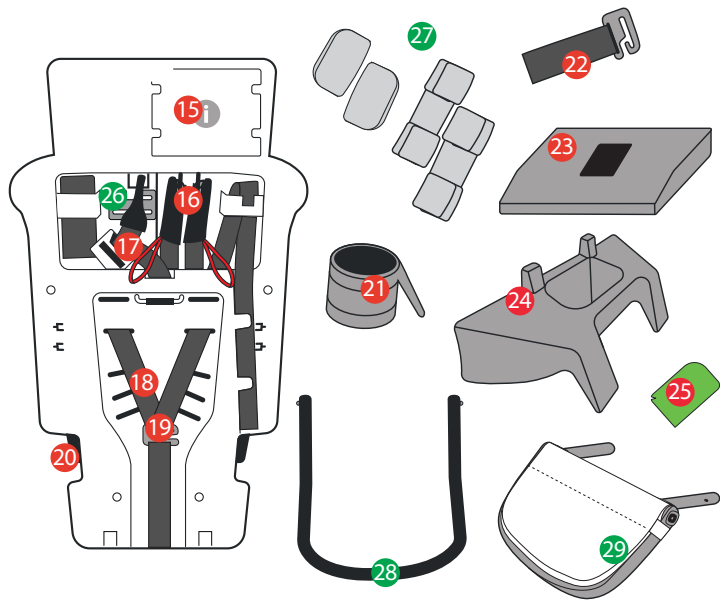
12. Anti-Rebound Bar/Panel Release Button

13. Anti-Rebound Bar/Panel Slots

14. Harness Adjustment Strap and

Release Button

# PARTS



## PARTS

15. Instruction Manual Storage

**Located under flap**

16. LATCH/UAS Connectors

**Located under flap**

17. Top Tether **Located under flap**

18. Harness Straps

19. Harness Strap Metal Plate

20. Forward-Facing Belt Path

21. Cup Holder

22. SafeStop™

23. Lap Belt Cushion **U.S. Only**

24. Rear-Facing Base

25. Diono® Cover Tool

### **ONLY INCLUDED WITH SELECT MODELS**

26. Belt Locking Clip

27. Harness Pads

28. Anti-Rebound Bar (ARB)

29. Anti-Rebound Panel (ARP)

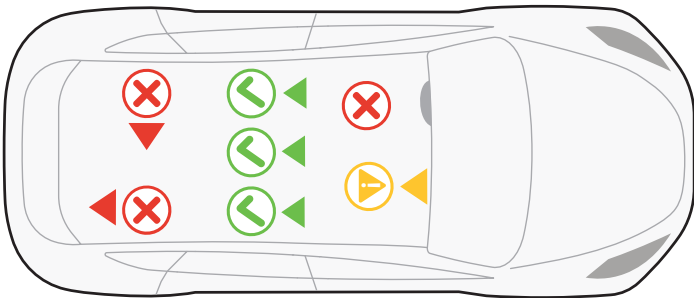
30. Comfort Insert

31. Side Impact Management (SIM) Pod

## VEHICLE SEATING LOCATIONS

**NEVER place this child restraint rear-facing in a vehicle seating location with an active frontal air bag.** If the airbag inflates, it can cause serious injury or death to your child. For vehicles with side air bags, refer to your vehicle owner's manual for information on your child restraint installation.

According to accident statistics, children are safer when properly restrained in the vehicle's rear seating positions than in the front seating positions. The safest seating position is one that works best for your specific child restraint, family and vehicle model.



# LATCH / UAS

## WHAT IS LATCH/UAS?

Most vehicles manufactured after September 1, 2002, are equipped with:



**U.S.: LATCH** (Lower Anchors and Tethers for CHildren)

**Canada: UAS** (Universal Anchorage System)

Check your vehicle owner's manual to determine LATCH/UAS lower anchor compatible seating positions. Some vehicle manuals use the term "ISOFIX" instead; LATCH/UAS can also be used in vehicle seating positions that are equipped with ISOFIX. Look for the LATCH/UAS symbol that may be visible by the crease of the rear seats.

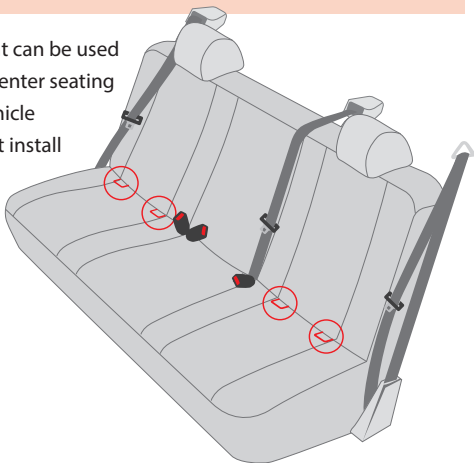
- ▶ **WARNING: DO NOT use the LATCH/UAS strap to install this child restraint rear-facing when restraining a child weighing over 35 lb (15.8 kg) or forward-facing when restraining a child weighing over 40 lb (18 kg).**
- ▶ **DO NOT install using both LATCH/UAS connectors and the vehicle seat belt at the same time.**

## LATCH / UAS

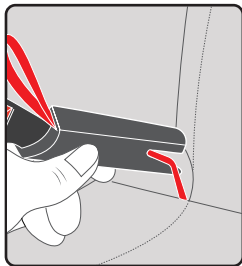
Before installing this child restraint, you must determine the method of installation and the best vehicle seating position for that method. This child restraint can be installed either using LATCH/UAS or the Vehicle Seat Belt.

**DO NOT install using both methods at the same time.**

When determining whether the child restraint can be used with vehicle LATCH/UAS anchors in the rear center seating position, it is critical that you refer to your vehicle owner's manual. If the child restraint does not install best in the rear center seating location, it is recommended to move to one of the outboard seating positions.



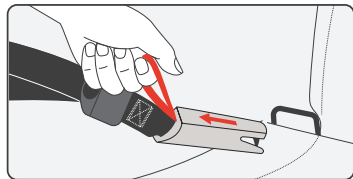
## LATCH / UAS



### ATTACH

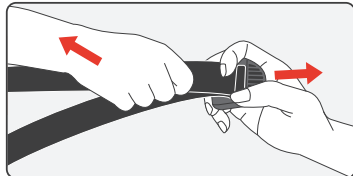
**When attaching the** LATCH/UAS connector to the vehicle LATCH/UAS anchors,

- Make sure there is only **ONE** connector per vehicle anchor.
- Each LATCH/UAS connector strap is lying flat and not twisted.
- You will hear an audible **“click”** to confirm engagement.
- Make sure the red release strap is facing up.



### REMOVE

- **Remove** the LATCH/UAS connectors from vehicle anchors by **pulling the red release straps**.
- **Loosen** the LATCH/UAS system by pulling back on the lower anchor adjuster while pulling on the adjuster strap.



- ▶ ***Store the LATCH/UAS connectors in the storage compartment on the back side of your car seat.***

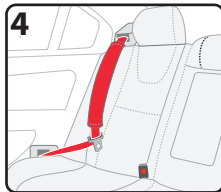
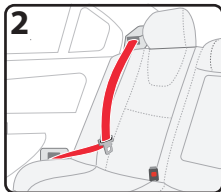
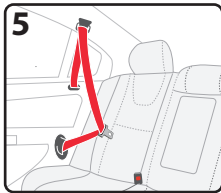
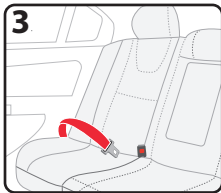
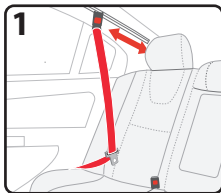
## VEHICLE SEAT BELT TYPES

The following types of vehicle belts  
**CANNOT BE USED** with your child restraint.

If any of the belt types listed below are in the chosen seating position, you **MUST** choose another seating position.

1. Motorized (Automatic) Vehicle Belts
2. Dual Retractor Lap/Shoulder Belts
3. Non-Locking Lap Belts
4. Inflatable Seat Belts
5. Door Mounted Vehicle Belts

*Please refer to your vehicle owner's manual for specific information about seat belts and their use with child restraints.*





# VEHICLE SEAT BELT TYPES

## TYPES OF SEAT BELT LATCH PLATES SAFE TO USE WHILE SECURING YOUR CAR SEAT

### 1. Lap Belt with Locking Latch Plate.

- Once buckled, the vehicle belt is tightened by pulling on the free end of the strap until the belt is tight.

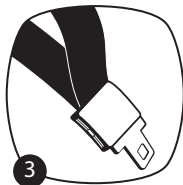
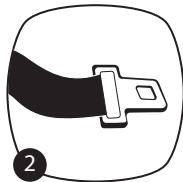
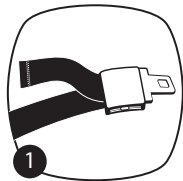
**TIP:** A way to tell if the seat lap belt is a locking latch plate is to sit in the vehicle and buckle yourself in. Pull gently on the lap belt. If it stays tight, it is locking.

### 2. Lap Belt with Automatic Locking Retractor (ALR). The automatic locking retractor does not allow the lap belt to get longer once it is buckled and retractor is locked.

- The vehicle belt is tightened by feeding seat belt webbing into retractor after it has been locked.

### 3. Lap/Shoulder Belt with Locking Latch Plate. The lap portion of this belt does not loosen once the belt is buckled.

- The vehicle belt is tightened by pulling up hard on shoulder belt and feeding the extra webbing into the retractor.

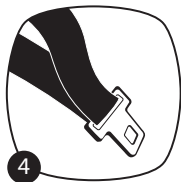


## VEHICLE SEAT BELT TYPES

### 4. Lap/Shoulder Belt with Sliding Latch Plate with Locking

**Retractor.** The latch plate slides freely along the lap/shoulder belt.

- Vehicle belts with sliding latch plates are typically locked at the shoulder belt retractor by pulling all of the webbing out slowly until it stops to switch the retractor.



▶ **DO NOT use Non-Locking Latch Plates** to secure your car seat. Types of non-locking latch plates are:

- Sliding Latch Plate with an Emergency Locking Retractor.
- Dynamic Latch Plate
- Sewn-On Latch Plate

▶ *Please refer to your vehicle owner's manual for further information on which type of **LATCH PLATES** are located in your vehicle.*

▶ **NOTE:** LATCH/UAS can be used **IN PLACE** of these vehicle belt types. Refer to your vehicle owner's manual for LATCH/UAS locations.

# VEHICLE SEAT BELT TYPES

## TYPES OF RETRACTORS

### 1. Emergency Locking Retractors (ELR)

- Only locks with sudden stops, accelerations, turns or if involved in an accident.
- For **Rear-Facing** and **Forward-Facing** installations you **MUST** use LATCH/UAS or a locking clip if your vehicle is only equipped with ELR retractors.

### 2. Automatic Locking Retractor (ALR)

- Found in older vehicles and **MUST** be used to secure your child in **Rear-Facing** and **Forward-Facing** installations only.

### 3. No Retractor

- Some older vehicles do not have a retractor to store the excess seat belt webbing, leaving the excess webbing visible. **Lap belts without a retractor will always have a latch plate that provides the locking feature necessary to secure your car seat properly.**

# VEHICLE SEAT BELT TYPES

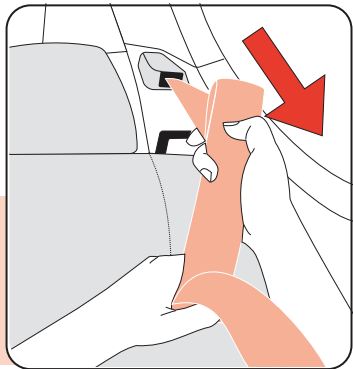
## 4. Switchable Retractor

- Most common type of retractor and is switchable from (ELR) to (ALR).
- **MUST** switch to **(ALR)** mode for **Rear-Facing** and **Forward-Facing** installations only.
- Leave in **(ELR)** mode for **Booster** use only.

### SWITCHING THE RETRACTOR FROM (ELR) TO (ALR) MODE

1. Feed latch plate into the proper belt path. Be sure the belt is flat and not twisted.
2. Click the latch plate into the vehicles buckle.
3. Locate the retractor then gently pull the seat belt out of the retractor until no more webbing comes out, then slowly feed webbing back into retractor.

- ▶ **IMPORTANT: You will hear clicking. This is how you know you have locked the retractor.**
- ▶ *Review your vehicle owner's manual for specific instructions on what type of seat belt system your vehicle is equipped with.*

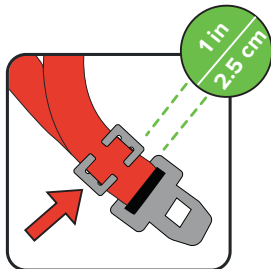
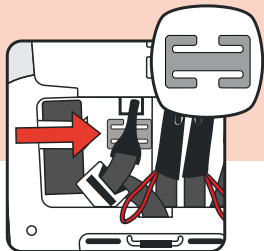


## VEHICLE SEAT BELT TYPES

### BELT LOCKING CLIP (Only included with select models)

**WARNING:** If your vehicle lap/shoulder belt is equipped with an ELR (Emergency Locking Retractor) that does not switch to function as an ALR (Automatic Locking Retractor), you **MUST** use a locking clip to secure lap portion of vehicle seat belt. If you have any questions, please consult your vehicle owner's manual or contact the vehicle manufacturer.

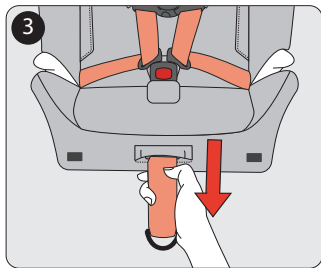
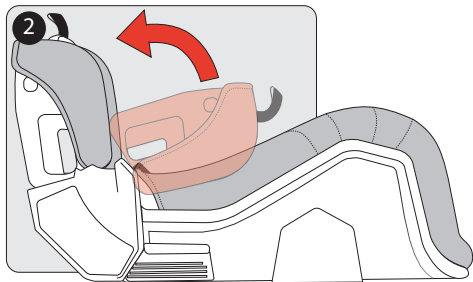
- 1. Remove the belt locking clip from storage location on back of seat.**
- 2. Route the vehicle seat belt through the proper belt path and buckle it in.** While pushing down on seat, pin the two straps together behind the buckle tongue. Unbuckle the belt without allowing it to slip.
- 3. Attach locking clip to lap/shoulder belt.** Buckle belt. Check that lap belt does not move by pulling hard. If the belt loosens or lengthens, repeat the procedure.



# FIRST SETUP

## A. UNFOLDING CAR SEAT

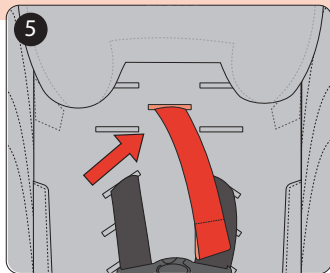
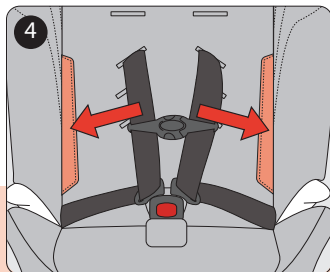
1. Place the car seat on its back on a flat surface and unfasten the red carry strap from the bottom. Be sure the harness adjuster strap moves freely and is not locked within the bottom of the seat. Remove cup holder and/or other packaged items if present.
2. Rotate bottom **OPEN** until you hear it “click”. This confirms the car seat is locked for use.
3. Pull harness adjusting strap until harness begins to tighten. If it does not tighten freely, check the belt path on the back of the seat bottom is clear from obstruction.



## FIRST SETUP

4. Fasten both of the fabric side panels on the inside of the cover.
5. Tuck the red strap through the center slot between the upper harness slots.

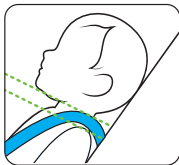
**IMPORTANT:** Before securing your child, make sure the car seat is locked in the open position. If not, repeat the instructions from step one.



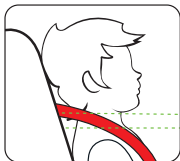
# FIRST SETUP

- ▶ **IMPORTANT!** *Setup harness before installing car seat in vehicle.*

## B. HARNESS STRAP PLACEMENT



**Rear-Facing:** Harness straps **MUST** be at or just below the child's shoulders. The top of the head must be at least 1.5 in (3.8 cm) below the top of the car seat shell.



**Forward-Facing:** Harness straps **MUST** be above the child's shoulders. The top of the child's ears **MUST** be below the top of car seat shell.

## C. BUCKLE SLOT PLACEMENT

**Rear-Facing:** Any of three buckle positions are acceptable, as long as the harness is snug on the child's hips and child is not sitting directly on top of center buckle.

**Forward-Facing:**

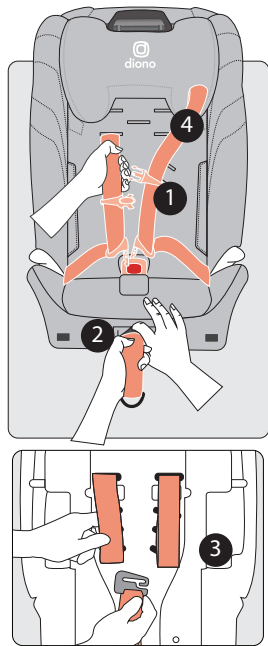
- **26.5–30 lb (12–13.6 kg) MUST** use the middle buckle slot **ONLY!**
- Above **30 lb (13.6 kg) MUST** use the forward most buckle slot **ONLY!**



# FIRST SETUP

## D. CHANGING HARNESS POSITION

1. Unbuckle the chest clip and harness buckle.
2. Push down on silver lever and pull shoulder straps forward to loosen harness.
3. Detach harness straps from metal harness strap hook on back of seat.
4. Pull each harness strap through to the front of the seat.
5. Re-locate each harness strap to the correct slot determined. Then push through to the back of the seat taking care to keep each harness strap flat and not twisted.
6. Re-secure the harness straps to the metal plate. Make sure to secure the left strap onto the metal hook first then secure the second strap onto the metal hook.

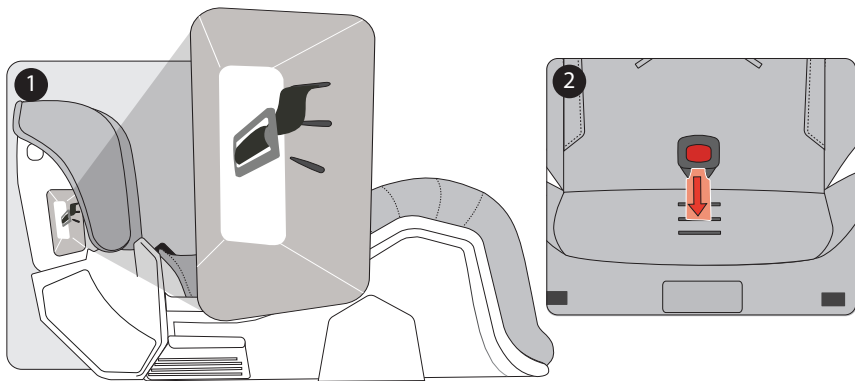


# FIRST SETUP

## E. BUCKLE STRAP SLOT CHANGE

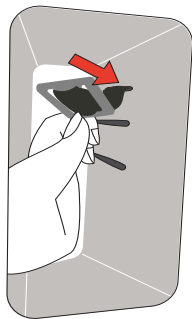
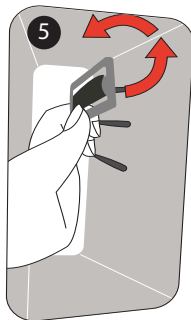
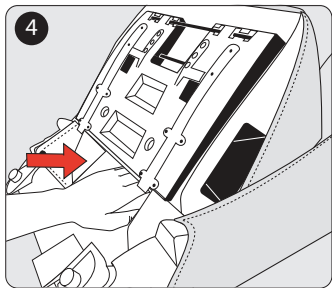
### Buckle Strap Removal

1. Look through the **rear-facing** belt path for a better view of the buckle strap metal retainer.
2. To create slack, locate buckle and push buckle strap into the bottom of the car seat base.



## FIRST SETUP

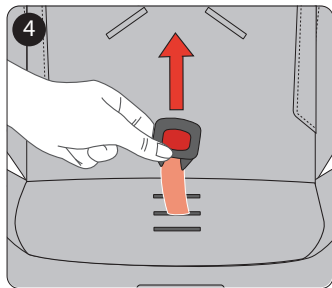
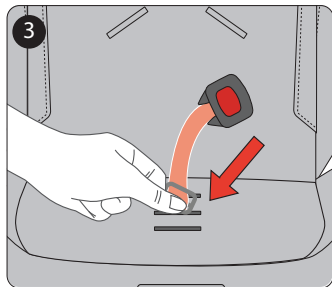
3. Partially fold the seat.
4. Reach into the bottom of the seat. You will feel the buckle strap metal retainer.
5. Rotate the metal retainer vertical and insert it up through the shell and pad. From the top of the car seat, pull the buckle strap out.



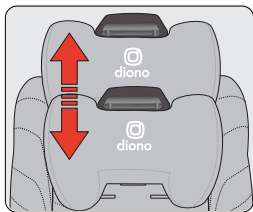
# FIRST SETUP

## Buckle Strap Insert

1. Find the appropriate buckle slot.
2. Make sure the red release button faces towards the front of the car seat and the buckle strap is not twisted.
3. Hold the metal retainer vertically and firmly push it through the appropriate slot and all the way through the bottom of the seat.
4. Pull up on buckle strap to confirm buckle is secured.



# FIRST SETUP

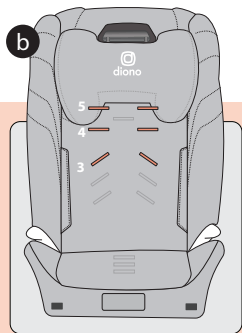


## F. ADJUSTING HEADREST

Press lever on the headrest and slide it up or down to adjust. Listen for audible **“click”** to confirm the headrest is in locked position.

### IMPORTANT!

- a. When using harness slots 1-2, position the headrest level with the top of the seat.
  - b. When using harness slots 3-5, position the headrest so that the bottom edge is above the shoulders and is level with the jaw.
- ▶ If the headrest can't be lowered enough so that it is even with the child's jaw, position the headrest so it is level with the top of the seat.
  - ▶ **IMPORTANT:** The child is too tall for the car seat if the shoulders touch the bottom of the adjustable headrest when it's set at the highest position, or if the child is more than 57 in (144 cm) tall.



## FIRST SETUP

### G. ANTI-REBOUND PANEL (ARP) (Only included with select models)

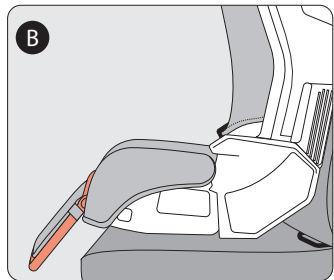
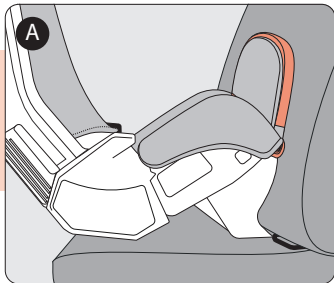
- ▶ **Diono® RECOMMENDS** using the anti-rebound panel for rear and forward-facing installations.
- ▶ **NEVER** use in the up position for forward-facing installations

The Anti-Rebound Panel has two positions;

- A. UP** for rear-facing installations only, as an anti-rebound bar.
- B. DOWN** for forward-facing installations only, as a comfort panel.



Use the guide on the side of the ARB to help guide you to the correct position.



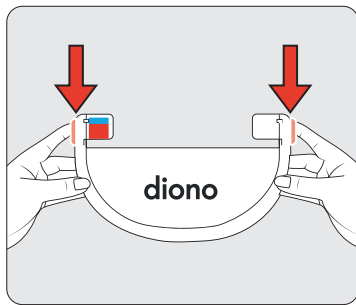
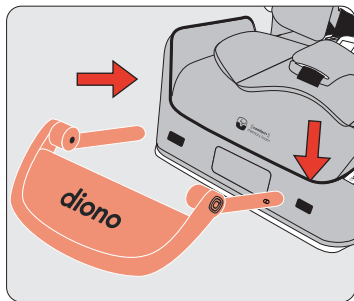
## FIRST SETUP

### To Install:

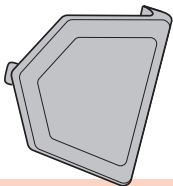
1. If included, place the ARP into the slots on the front of the car seat until an audible **“click”** is heard. Pull the panel outwards to confirm it is locked.
2. Push the buttons on the outside hinge of the ARP and rotate the board up or down until an audible **“click”** is heard. Pull on the ARP to confirm it is locked into position.

**To remove, press the release the buttons on the outside of the seat and pull the ARP out. NOTE:**

*You may need to release one side at a time.*



## FIRST SETUP



### H. SIDE IMPACT MANAGEMENT (SIM) POD (Only included with select models)

The SIM Pod is an additional layer for side impact protection.

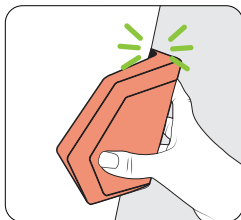
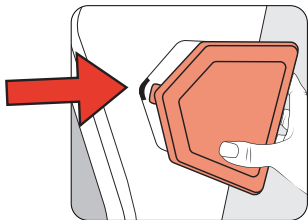
- ▶ **ONLY** place your SIM pod on the side of the car seat adjacent to the vehicle door.



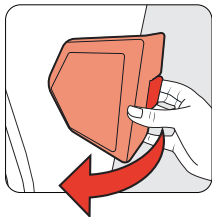


## FIRST SETUP

1. Insert the front hook into the slot on the side of the seat.
2. Insert the back hooks into the slots on the back of the seat. An audible "**click**" should be heard when attached to the slots correctly.



*To remove the SIM pod, lift the pod tab release from the back of the seat, then gently remove the front hook from the side of the seat.*



## REAR-FACING

This child restraint is designed for Rear-Facing installation for children who weigh 4- 50 lb (1.8–22.7 kg) and whose height is 18-44 in (46-112 cm). Infants who weigh less than 26.5 lb (12 kg) and are under one year old, **MUST** use this car seat rear-facing.

- ▶ Install this car seat tightly in your vehicle. When checked at the rear-facing belt path, the car seat should not move more than 1 in (2.5 cm) from side-to-side or front-to-back.
- ▶ Harness straps **MUST** be at or just below the top of your child's shoulders. Place the chest clip at armpit level.
- ▶ Do not use **adjustable bottom** in rear-facing mode.

The American Academy of Pediatrics (AAP), NHTSA, Transport Canada and Diono® **RECOMMENDS** that children be rear-facing until they reach the maximum rear-facing height or weight of their car seat. This car seat can remain rear-facing up to 50 lb (22.7 kg) or 44 in (112 cm) tall.

**Rear-facing is the safest position for your child.** Even if your provincial, territorial, or state regulations allow you to move to a forward-facing seat, your child should keep using rear-facing seats as long as possible.

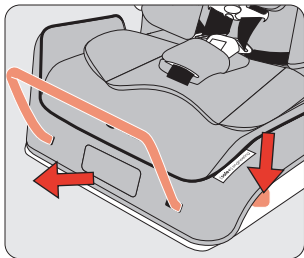
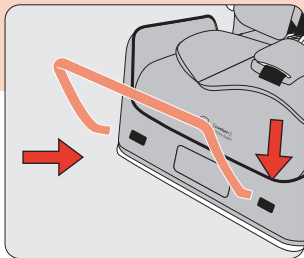
# REAR-FACING

**ANTI-REBOUND BAR (ARB)** (Only included with select models)

- ▶ **Diono® RECOMMENDS using the anti-rebound bar with rear-facing installs.**
- ▶ **DO NOT** use the ARB in any other configuration than noted for rear-facing installations.
- ▶ **DO NOT** use forward-facing.

If included, place the ARB into the slots on the front of the car seat until hearing an audible "**click**". Pull bars outwards to confirm it is locked.

*To remove, press the release buttons on the outside of the seat and pull the ARB out. NOTE: You may need to release one side at a time.*

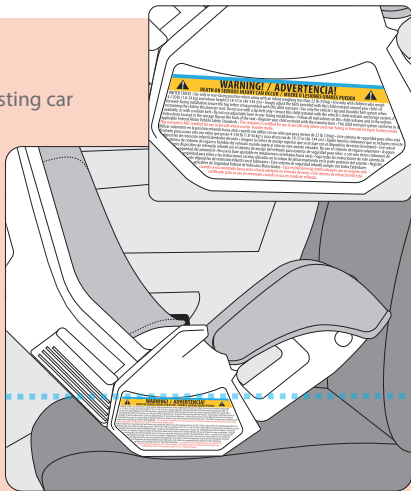


# REAR-FACING

## RECLINE LEVEL INDICATOR LINE

If installing without the rear-facing base, use the blue recline level indicator line on the warning label on your car seat to make sure the car seat is at the appropriate angle for your child.

- ▶ **Use in rear-facing installation ONLY!**
- ▶ Vehicle **must** be on level ground when adjusting car seat to proper incline.
- ▶ **It is critical that your car seat is at the proper incline, as an infant's airway could be cut off if their head is forward too long without support.**
- ▶ The blue recline indicator line should be level with the ground. If the blue recline level indicator line is not level with the ground, your car seat will need to be adjusted.



# REAR-FACING

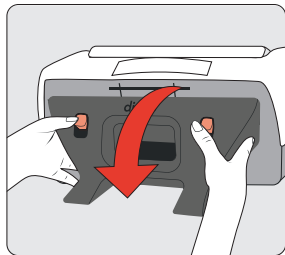
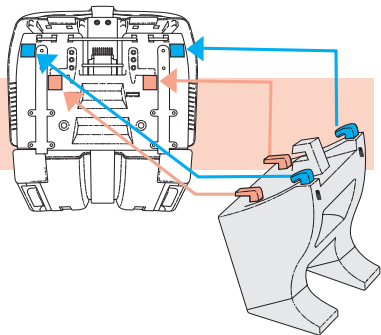
## DETACHABLE REAR-FACING BASE

Diono® RECOMMENDS using the rear-facing base.

- ▶ **ONLY** use rear-facing base on rear-facing installs.

1. Confirm car seat is locked in its unfolded position.
2. Insert hooks into the aligned slots and rotate the base until an audible “click” is heard. **Confirm base is locked and does not move.**

*To remove, press the release buttons and pull the top end outwards to remove the top section. Gently detach the base lower hooks from the seat bottom.*

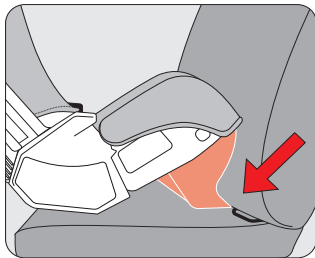


# REAR-FACING

## SEAT BIGHT

### Non-Elevated Seat Bight

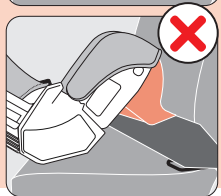
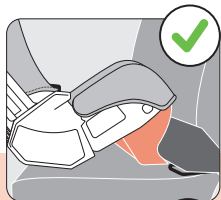
Place the car seat on the vehicle seat making sure the feet of the rear-facing base are securely tucked in the seat bight and flat on the vehicle seat bottom. The front of the car seat will also be touching the vehicle seat back



### Elevated Seat Bight

For vehicles with an elevated seat bight, make sure the feet of the rear-facing base are flat on the vehicle seat bottom. With an elevated seat bight, it is acceptable if the front of the car seat does not touch the vehicle seat back.

- ▶ **DO NOT** push the feet of the rear-facing base into the elevated seat bight as this will change the recline angle.
- ▶ If you cannot get an acceptable installation using the rear-facing base with an elevated seat bight, it is **recommended** to remove the rear-facing base and follow the level line for proper installation. This will allow the front of the car seat to contact the vehicle seat back for a more secure installation.



## REAR-FACING

### COMFORT INSERT (Only included with select models)

To ensure a better fit for smaller infants, we recommend using the comfort insert included with your car seat. The comfort insert also includes a removable travel high wedge for better positioning of infants. The use of these cushions and the wedge is optional and does not affect the safety of the seat.

To use, slide the buckle through the buckle slot on the comfort insert that matches the slot chosen on the seat, then adjust harness.



## REAR-FACING

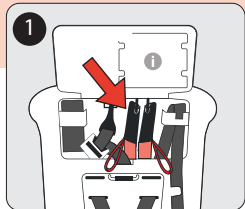


### INSTALLATION WITH LATCH/UAS;

4-35 lb / 1.8-15.8 kg

- ▶ **DO NOT** install by this method for a child weighing more than 35 lb (15.8 kg). Reinstall with vehicle seat belt for a child weighing between 35–50 lb (15.8–22.7 kg).
- ▶ Before installing the child restraint, make sure your vehicle is on level ground.
- ▶ **Diono®** recommends the install of the rear-facing base and anti-rebound bar or panel depending on child restraint model.

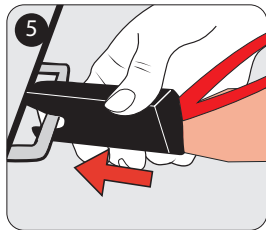
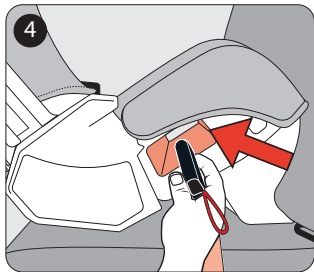
- 1. Remove the LATCH/UAS strap from the storage location on the back of seat.** *To release, pull the LATCH/UAS red release straps on the LATCH/UAS connectors.*
- 2. Extend the LATCH/UAS strap.** For easier installation, extend the LATCH/UAS strap to its maximum length by pressing the gray button and pulling on the strap.





## REAR-FACING

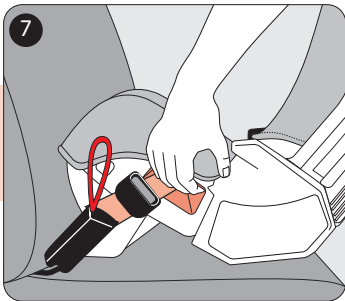
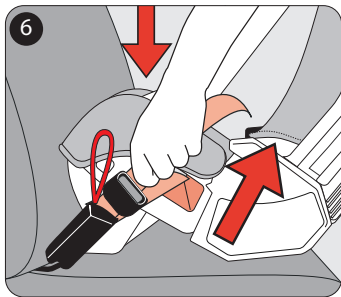
- 3. Place the car seat rear-facing in the back seat of the vehicle.** Center the car seat between the vehicle LATCH/UAS anchors. The seat bottom and feet of the rear-facing base should sit flat on the vehicle seat with no overhang.
- 4. Slide the LATCH/UAS strap through the rear-facing belt path and out the other side.** The LATCH/UAS strap should lie flat and not be twisted. The red release loops on the connectors should be facing up and the tightening mechanism should be on the child's left side of the seat.
- 5. Attach LATCH/UAS connectors to vehicle LATCH/UAS anchors and listen for audible "click" to confirm engagement.**



## REAR-FACING

- 6. Tighten the LATCH/UAS strap.** With one hand press down firmly in the center of the car seat while tightening the LATCH/UAS strap with the other hand. You may need to tighten further by pulling upwards in line with the belt path.
- 7. Test for tightness.** Grab the seat at the rear-facing belt path. Try to move the car seat side-to-side and front-to-back with the force of a firm handshake. If the seat moves less than 1 in (2.5 cm), it is tight enough.

- ▶ **DO NOT test by grasping the top or back of the car seat. Only check by grabbing at the rear-facing belt path opening.**



## REAR-FACING



INSTALLATION WITH LAP/SHOULDER BELT;

4-50 lb / 1.8-22.7 kg

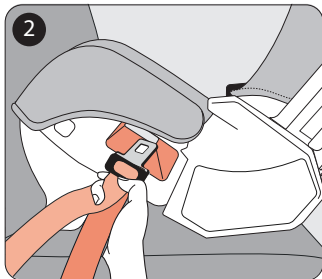


INSTALLATION WITH LAP BELT

4-50 lb / 1.8-22.7 kg

- ▶ Before installing child restraint, make sure your vehicle is on level ground.
- ▶ Diono® recommends the installation of the rear-facing base and anti-rebound bar or panel depending on child restraint model.

1. **Place the car seat rear-facing in the back seat of the vehicle.** Center the car seat on the vehicle seat. The seat bottom and feet of the rear-facing base should sit flat on the vehicle seat with no overhang.
2. **Slide the vehicle seat belt through the rear-facing belt path and out the other side.** Buckle it. Confirm the seat belt is flat and not twisted.



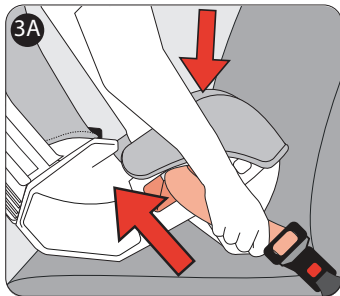
## REAR-FACING

### 3. Tighten the belt strap,

#### A. LAP/SHOULDER BELT

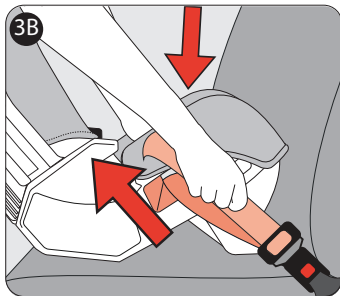
**Switch your vehicle seat belt to ALR mode.**

Once the retractor is locked, press down firmly in the center of the seat while pulling on the shoulder belt nearest to the buckle. Keep tension on the shoulder belt while feeding the slack back into the retractor.



#### B. LAP BELT

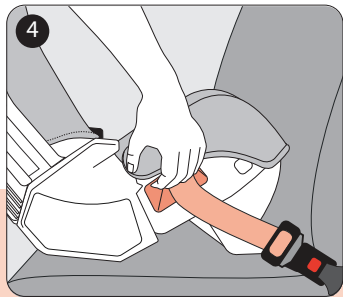
To tighten, press down firmly in the center of the car seat with one hand while tightening the lap belt strap with the other hand. You may need to tighten further by pulling in line with the belt path.



## REAR-FACING

- 4. Test for tightness.** Grab the seat at the rear-facing belt path. Try to move the car seat side-to-side and front-to-back with the force of a firm handshake. If the seat moves less than 1 in (2.5 cm), it is tight enough.

- ▶ **DO NOT test by grasping the top or back of the car seat. Only check by grabbing rear-facing belt path opening.**



## FOWARD-FACING

This child restraint is designed for forward-facing installation for children who weigh **26.5–65 lb (12–29.5 kg)** and whose height is **30-57 in (76-145 cm)**.

The **American Academy of Pediatrics (AAP)**, **NHTSA**, **Transport Canada**, and **Diono®** recommend that children be rear-facing until they reach the maximum rear-facing height or weight. This car seat can remain rear-facing up to 50 lb (22.7 kg).

- ▶ ***Diono® requires the use of the top tether on a forward-facing car seat.***
- ▶ When checked at forward-facing belt path, this car seat should not move more than 1 in (2.5 cm) from side-to-side or front-to-back.
- ▶ Harness straps **MUST** be above the top of your child's shoulders. Place chest clip at armpit level.
- ▶ In forward-facing mode, the top of the car seat **MUST** be supported by either the vehicle's head support or the vehicle's seat back.
- ▶ A gap between the car seat and the vehicle's seat back is acceptable as long as the top is supported, and the bottom is flat on the vehicle's seat.
- ▶ **DO NOT** use with the detachable base.
- ▶ **NOT USE** ARB or ARP in the up position

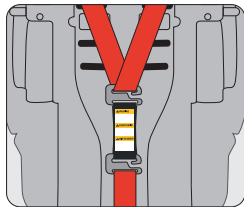
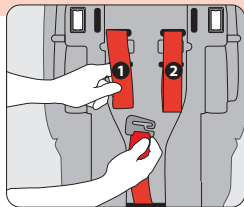
# FORWARD-FACING



## SAFESTOP™

- ▶ SafeStop™ is for use **ONLY** in forward-facing installations with children weighing 26.5–40 lb (12–18 kg).
- ▶ **DO NOT** use rear-facing. **DO NOT** use in booster mode.
- ▶ **IMPORTANT:** The SafeStop™ will need to be removed once the child reaches 40 lb (18 kg).

1. **Locate SafeStop™.**
2. **On the back of the seat, remove the harness straps from the metal plate.** Once detached, thread both the harness straps onto the metal hook of the SafeStop™. Connect the left side of harness first, then follow with the right.
3. **Thread the bottom of the SafeStop™ onto the harness strap hook.** Check to ensure proper engagement to the metal plate. Take care to ensure harness straps are not twisted and are clear from any obstructions.



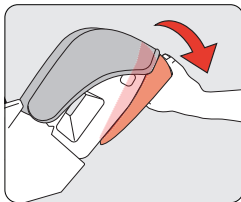
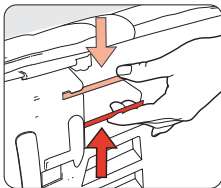
# FORWARD-FACING

## ADJUSTABLE BOTTOM

- ▶ **WARNING!** Use adjustable bottom for forward-facing installs only.
- ▶ **DO NOT** use rear-facing. **DO NOT** use in booster mode.
- ▶ **ALWAYS** needs to be lowered in forward-facing installations.

1. On the bottom of the car seat, near the front, locate the two metal bars.
2. Lift the bottom bar up and grasp the upper bar toward the seat bottom to release.
3. Pull the bar towards you to extend the adjustable bottom. Listen for an audible “**click**” to confirm the bottom is in locked position.

*To store adjustable bottom, lift the lower bar up while grasping the top bar and push the bottom back into the seat base.*





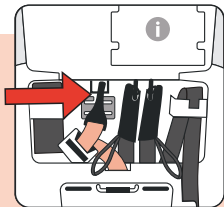
# FORWARD-FACING



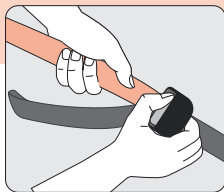
## TOP TETHER

*Diono® requires the use of the top tether on a forward-facing car seat.*

- ▶ A top tether is designed to reduce the movement of a child restraint in a collision.
- ▶ The top tether strap can be found on the back of your child restraint
- ▶ Top tether anchor points are different for every vehicle. Review your vehicle's owner manual to locate the specific anchor points for your top tether.
- ▶ **Store the top tether strap in a safe place when not in use so it does not become a safety hazard.**



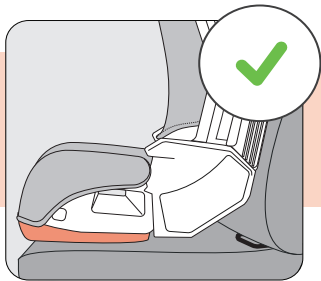
*To loosen or remove the top tether strap, push in on the gray button to loosen and pull on the tether strap, then unhook the top tether connector.*



# FORWARD-FACING

## 80/20 OVERHANG GUIDANCE

- ▶ **IMPORTANT:** To follow 80/20 overhang guidance, ensure that no more than 20% of the car seat base overhangs beyond the front edge of the vehicle seat cushion.



## ESTIMATING METHOD

1. Estimate the halfway point of the car seat base.
2. Then halve the outer half (the half farthest from the vehicle seat bight) to mark the spot that would be about 75%.
3. Add a bit more to the footprint that is supported by the seat cushion. This will be around 80% and that would be meeting the 80/20 overhang guidance.



**If results are unclear using the estimating method, use a tape measure and do the math.**

## FOWARD-FACING

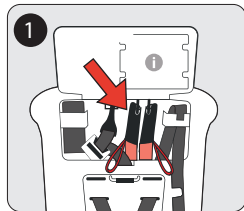


### INSTALLATION WITH LATCH/UAS;

26.5–40 lb / 12–18 kg

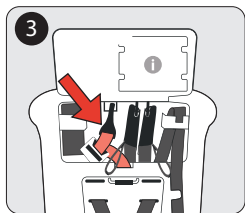
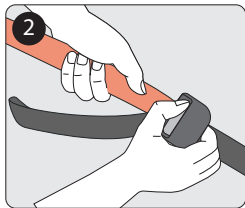
- ▶ *Diono® requires the use of the top tether on a forward-facing car seat.*
- ▶ **DO NOT install this method for a child weighing more than 40 lb (18 kg).** Reinstall with lap/shoulder belt for weights between 40–65 lb (18–29.5 kg).
- ▶ Ensure adjustable bottom has been lowered.

1. Remove the LATCH/UAS strap from the storage location on the back of seat. *To release, pull the LATCH/UAS red release straps on the LATCH/UAS connectors.*



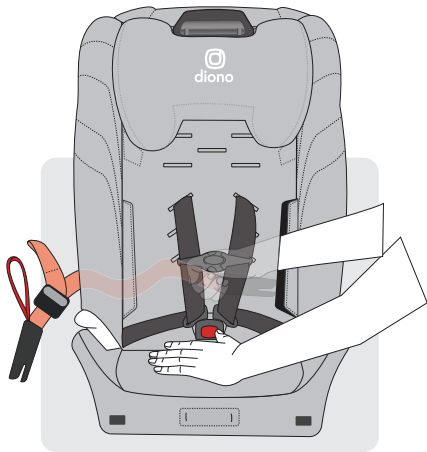
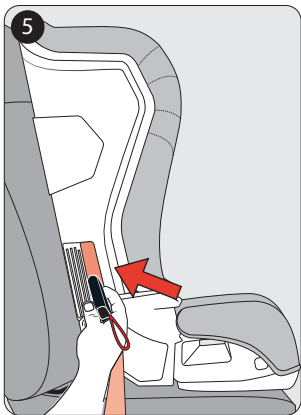
## FORWARD-FACING

- 2. Extend the LATCH/UAS strap.** For easier installation, extend the LATCH/UAS strap to its maximum length by pressing the gray button and pulling on the strap.
- If your vehicle allows, unhook and remove the top tether strap from storage location on the back of seat. Loosely attach the top tether strap. **Do not tighten. Consult your vehicle owner's manual for specific tether anchor locations and specific use.**
- 4. Place the car seat forward-facing in the back seat of the vehicle.** Center the car seat between the vehicle LATCH/UAS anchors. The entire seat bottom should sit flat on the vehicle seat.



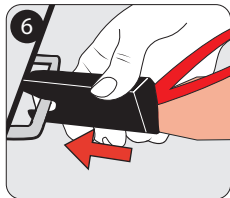
## FORWARD-FACING

5. Feed the LATCH/UAS connectors into the forward-facing belt path. The red release loops on the connectors should be facing up and the tightening mechanism should be on the child's right side of seat.
- For easier access to the belt path, open fabric side panels and reach behind cover.

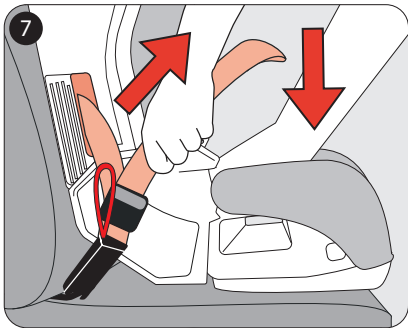


## FOWARD-FACING

6. **Attach the LATCH/UAS connectors to the vehicle's LATCH/UAS anchors and listen for an audible "click" to confirm engagement.** The LATCH/UAS strap should lie flat and not be twisted.

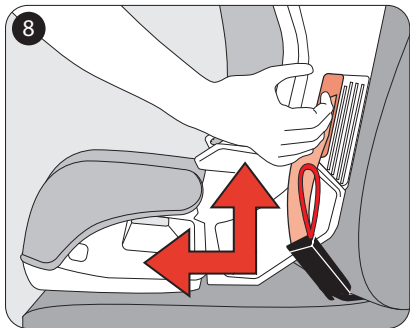


7. **Tighten the LATCH/UAS strap.** With one hand, press down firmly in the center of the car seat while tightening the LATCH/UAS strap with the other hand. You may need to tighten further by pulling upwards in-line with the belt path.
- **For better leverage, feed the strap back through the fabric cover and then pull to tighten**



## FORWARD-FACING

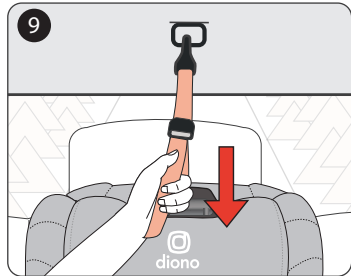
8. **Test for tightness.** Grab the seat at the **forward-facing** belt path. Try to move the car seat side-to-side and front-to-back with the force of a firm handshake. If the seat moves less than 1 in (2.5 cm), it is tight enough.



- ▶ **DO NOT test by grasping the top or back of the car seat. Only check by grabbing the forward-facing belt path opening.**

## FOWARD-FACING

9. Tighten the top tether strap to remove the slack. There should not be any extra tension on the top tether.



- ▶ **Do not** push on the car seat back while tightening. Compressing the car seat into the vehicle seat might result in a top tether that is too tight and may damage vehicle upholstery
- ▶ **Store any excess webbing so it does not become a safety hazard.**



## FORWARD-FACING



### INSTALLATION WITH LAP/SHOULDER BELT;

26.5–65 lb / 12–29.5 kg

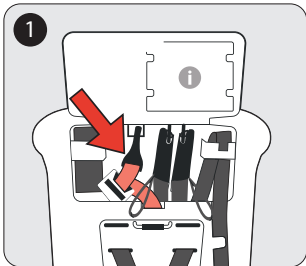


### INSTALLATION WITH LAP BELT;

26.5–65 lb / 12–29.5 kg

- ▶ *Diono® requires the use of the top tether on a forward-facing car seat.*
- ▶ Ensure adjustable bottom has been lowered.

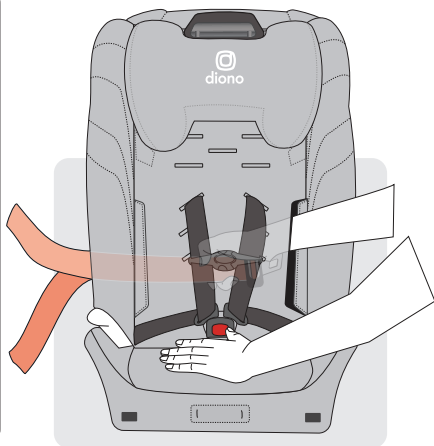
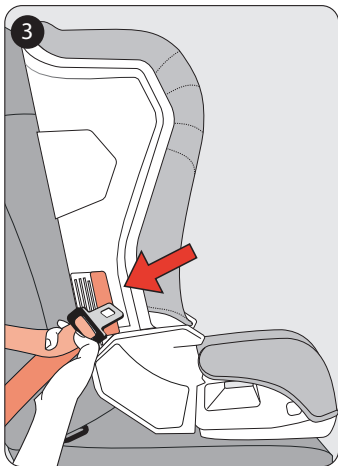
1. If your vehicle allows, unhook and remove the top tether strap from storage location on the back of seat. Loosely attach the top tether strap. **Do not tighten.** *Consult your vehicle owner's manual for specific tether anchor locations and specific use.*
2. Place the car seat **forward-facing** in the back seat of the vehicle. The entire seat bottom should sit as flat as possible on the vehicle seat.



## FORWARD-FACING

- Slide the vehicle seat belt through the **forward-facing** belt path and out the other side. Buckle it. The seat belt should lie as flat as possible and not be twisted.

  - For easier access to the belt path, open fabric side panels and reach behind cover.**

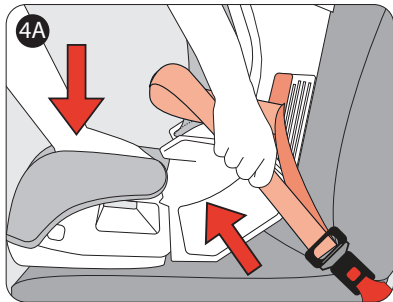


## FORWARD-FACING

### 4. Tighten the belt strap,

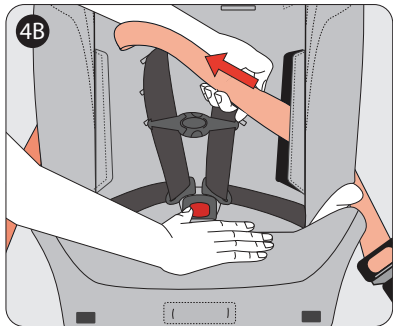
#### A. LAP/SHOULDER BELT

**Switch your vehicle seat belt to ALR mode.** Once the retractor is locked press down firmly in the center of the seat while pulling on the shoulder belt nearest to the buckle. Keep tension on the shoulder belt while feeding the slack back into the retractor.



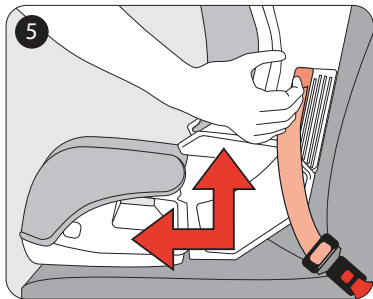
#### B. LAP BELT

To tighten, press down firmly in the center of the car seat with one hand while tightening the lap belt strap with the other hand. You may need to tighten further by pulling in line with the belt path.



## FOWARD-FACING

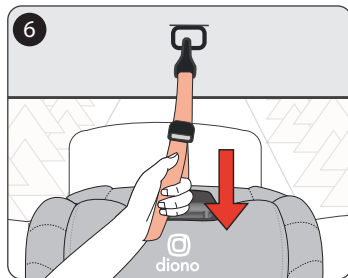
5. **Test for tightness.** Grab the seat at the **forward-facing** belt path. Try to move the car seat side-to-side and front-to-back with the force of a firm handshake. If the seat moves less than 1 in (2.5 cm), it is tight enough.



- ▶ **DO NOT test by grasping the top or back of the car seat. Only check by grabbing the forward-facing belt path opening.**

## FOWARD-FACING

6. Tighten the top tether strap to remove the slack. There should not be any extra tension on the top tether.



- ▶ **Do not push on the car seat back while tightening.** Compressing the car seat into the vehicle seat might result in a top tether that is too tight and may damage vehicle upholstery
- ▶ **Store any excess webbing so it does not become a safety hazard.**

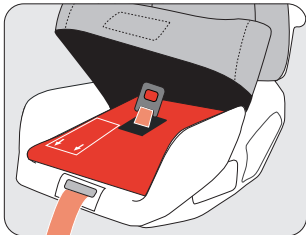
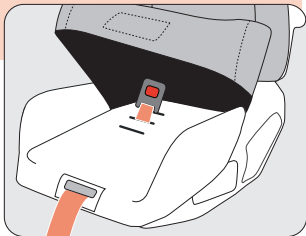
# FORWARD-FACING

## LAP BELT CUSHION (Use in U.S. ONLY)

**\*IMPORTANT! FOR FORWARD-FACING INSTALLATIONS USING A LAP BELT ONLY WITH NO TOP TETHER ANCHOR AVAILABLE FROM 26.5–65 LB (12–29.5 KG). DO NOT USE REAR-FACING.**

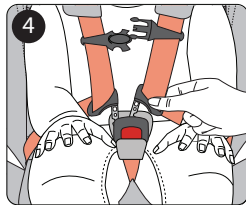
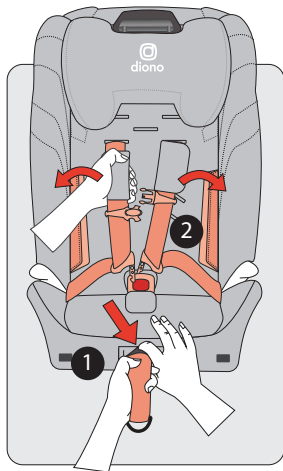
**\*MUST USE 5TH HARNESS SLOT.**

1. Remove the center buckle pad by pulling it carefully up and over the buckle.
2. Unhook the seat cover from seat bottom. Lift the seat cover away from the seat bottom and remove the buckle.
3. Place the lap belt cushion on the seat bottom, and then slide the buckle metal retainer down through the slot in the cushion to the bottom of the car seat.
4. Guide buckle through seat cover bottom and memory foam cushion. Reattach cover to seat bottom.
5. Reinstall the center buckle pad. ***Should you need a longer buckle, these are available by calling customer support.***



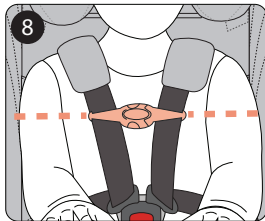
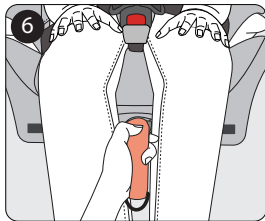
## SECURING CHILD

- 1.** To loosen the harness, push down on the silver harness release and pull the shoulder straps forward.
- 2.** Unfasten the chest clip and the harness buckle and move the harness straps to the side.
- 3.** Properly position the child in the car seat, all the way back and sitting upright.
- 4.** Position the harness straps around the child and fasten the buckle with the buckle pad positioned between the buckle and the child. Gently tug on the harness strap to make sure the straps are securely buckled.
- 5.** Gently pull the harness straps upwards to snugly fit lap portion of the harness across the body and low on the child's hips.



## SECURING CHILD

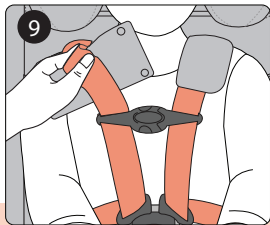
6. Slowly pull harness adjuster strap downwards (**forward-facing**) or straight up (**rear-facing**), using a pull-tug motion, to tighten harness for a comfortable and snug fit around child.
7. Confirm the harness is not twisted and lays flat against child's chest.
8. Properly position the harness chest clip level with the child's armpits then fasten the chest clip together.



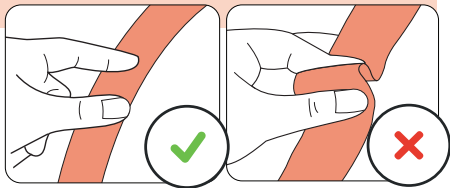


## SECURING CHILD

9. Finally, do the **PINCH TEST**. Take the thumb and index finger and 'glide' your fingers along the harness at the collar bone. If you are able to pinch any of the webbing of the harness strap, tighten it again. If you can't pinch the harness, then it's properly tightened.



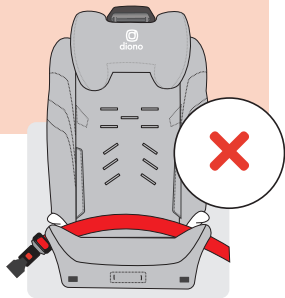
- ▶ **Harness pad use is optional and for comfort only.**
- ▶ **NOTE:** If the harness pads are used, you may need to unfasten the harness pad to access strap to successfully administer the pinch test.



## BOOSTER MODE

This child restraint is designed for booster mode for children who weigh 40–120 lb (18–54 kg) and whose height is 40-57 in (101-145 cm).

- ▶ **WARNING!** use **ONLY** the vehicle lap/shoulder belt system when restraining the child in the booster seat.
- ▶ **DO NOT use a lap belt only!**
- ▶ **DO NOT** use with detachable base.
- ▶ **DO NOT** use with adjustable bottom lowered.
- ▶ **DO NOT** use if the child's shoulders are not at or above the 4th harness slot.
- ▶ The entire booster seat bottom should sit as flat as possible on the vehicle seat.
- ▶ *Diono® requires the use of the top tether on a forward-facing car seat.*



**ALWAYS** secure the child restraint when it is unoccupied using the vehicle lap/shoulder belt or LATCH/UAS connectors. It could injure other occupants in a sudden stop or collision.

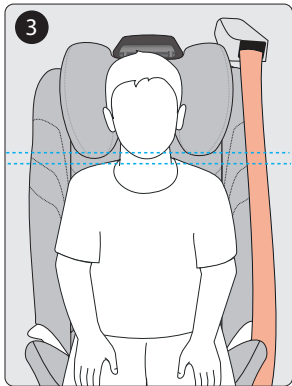
## BOOSTER MODE



### INSTALLATION WITH LAP/SHOULDER BELT ONLY;

40–120 lb / 18–54 kg, 40-57 in / 101-145 cm

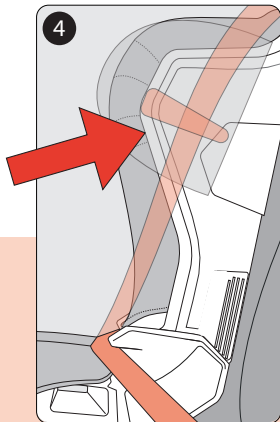
1. Remove the 5-Point harness.
2. Place the child in the car seat with their back flat against the back of the seat.
3. Adjust the head support to the proper height. **The bottom of the headrest should be even with the child's jaw.**
  - *Squeeze the headrest height adjuster to adjust its height up or down to fit the child.*



## BOOSTER MODE

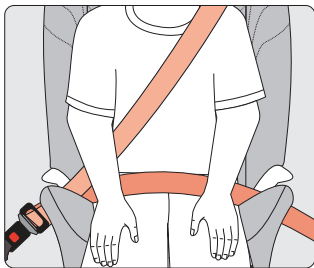
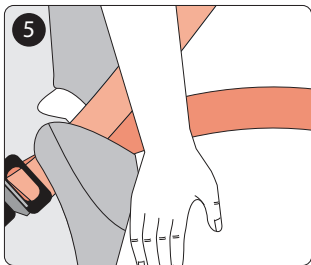
4. Feed the shoulder belt through the shoulder belt guide and over booster seat.
  - **Be sure the shoulder belt lays across your child's shoulders, between the neck and the edge of the shoulder. The shoulder belt should NOT hover over the shoulder or touch the child's neck.**

- ▶ **IMPORTANT!** When the shoulder belt is routed through the shoulder belt guide, pull some webbing out of the retractor. Slowly release it to make sure the belt property feeds back into the retractor. **Do this between each use.**
- ▶ If the belt does not retract properly, you must choose another seating position or continue to use the seat in harness mode if the child is still within the forward-facing height or weight limits.



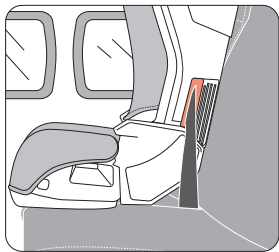
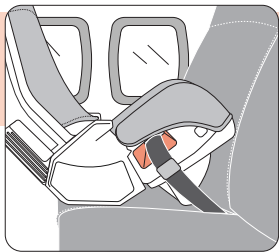
## BOOSTER MODE

5. Buckle the vehicle seat belt making sure the lap portion of the belt goes under both lap belt guides and lays across your child's hips. **DO NOT** lay the belt high over the child's belly.
- **Make sure the shoulder belt is under the lap belt guide and closest to the buckle.**



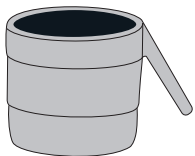
## AIRCRAFT INSTALLATION

- ▶ **If needed, ask the flight attendant for a “seat belt extender” and then use this extender to adjust the seat belt length.**
1. Adjust the seat belt buckle to its shortest length to ensure the buckle is not in the belt path and is accessible for release.
  2. Follow the instructions for the lap belt installation for rear-facing and for forward-facing.



**THIS RESTRAINT IS NOT CERTIFIED FOR USE IN AIRCRAFT IN BOOSTER MODE. Aircraft seats do not have shoulder belts which are required for booster mode with this child restraint.**

## FEATURES

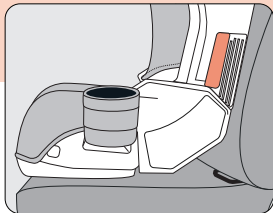
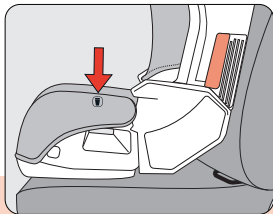


### CUP HOLDER

To attach, locate the cup holder icon on the seat cover on either side of the seat and insert the peg into the slot.

**Always** check to make sure the cup holder is secure and pushed all the way down into the slot on the car seat side wing. In the event of a sharp turn, sudden stop, or collision, loose objects can be thrown around and possibly cause serious injury to vehicle occupants.

- ▶ **WARNING: DO NOT use with hot liquids or foods as this could burn a child.**
- ▶ **IMPORTANT: DO NOT** step on or put excess weight on the cup holder which could cause it to break.

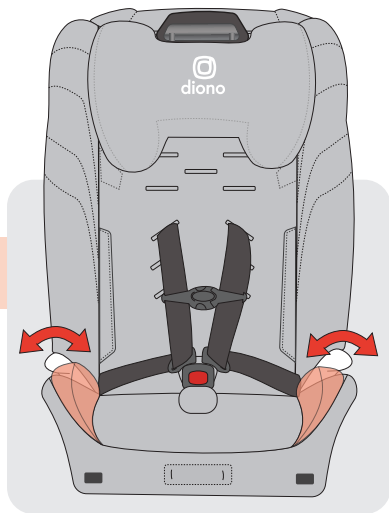


# FEATURES

## EXPANDABLE SIDE WINGS

The side wings can be adjusted for comfort. This will not impact on the safety of the car seat in any manner. Simply push the side wings outward as shown to extend.

- ▶ Do not step on or put excess weight which could cause them to break



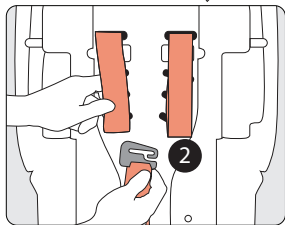
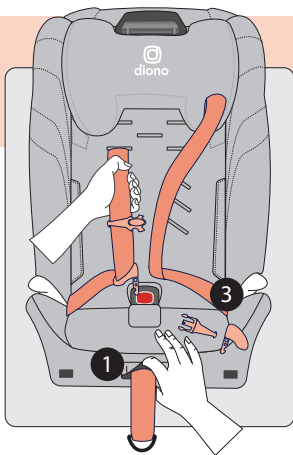


# HARNESSES STRAPS

- ▶ **HINT: Before removing or installing your harness straps have your phone handy and take photos of the process for future reference.**

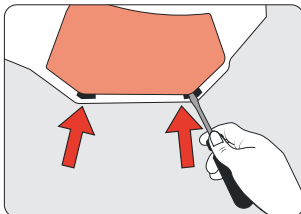
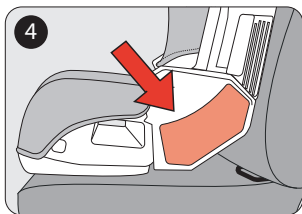
## HARNESSES STRAP REMOVAL

1. Loosen the harness straps by pressing the harness release button and while pulling the straps outwards.
2. Locate the metal plate on the back of the seat and remove the straps from metal plate. Gently pull the straps out of the front of the child restraint.
3. Remove the harness pads, chest clip, and buckle tongues.

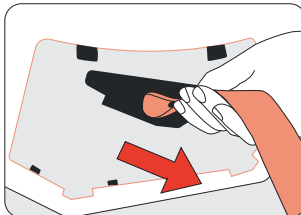
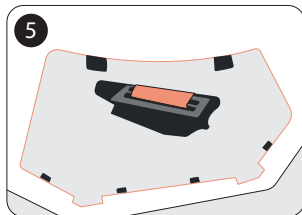


## HARNESS STRAPS

- Using a standard screwdriver, locate the notches in the harness access panel near the lower belt guides and pull the panel away from the seat shell.



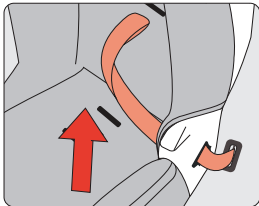
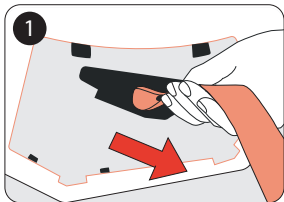
- Locate the metal retainer inside the strap compartment and remove the straps from each side of the seat.



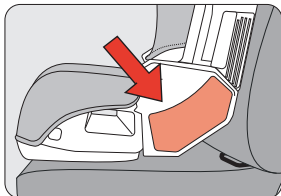
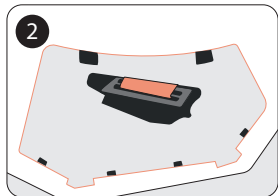
# HARNESS STRAPS

## HARNESS STRAP INSTALLATION

1. Insert the harness straps through the harness panel slots on each side of the seat and pull the strap up and out of the harness slot.

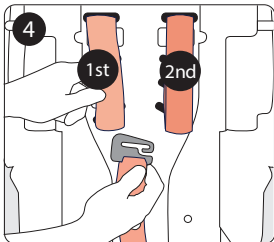
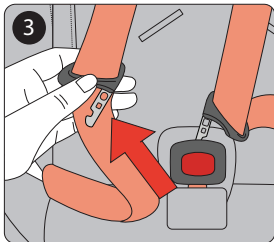


2. Pull the strap up until the metal retainer is fully contained in the compartment. Fasten and close the access panel by pushing into the panel slots on the seat shell until an audible **"click"** is heard. Repeat on the other side.



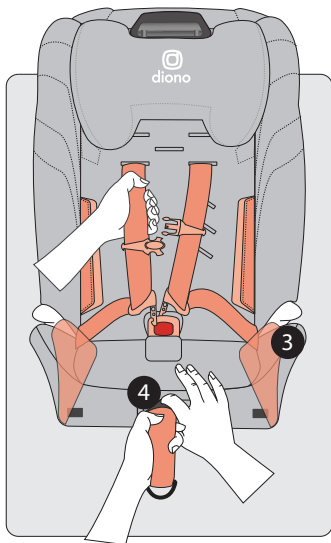
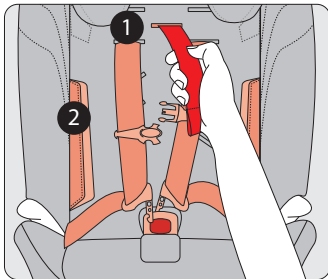
## HARNESSES STRAPS

3. Slide the new harness straps through the buckle tongues, re-attach the chest clip and reinstall the harness pads. Making sure the harness straps are oriented correctly and not twisted.
4. Re-secure the harness straps to the metal plate. Make sure to secure the left strap onto the metal hook first then secure the right strap second.
5. Tighten the harness.



## FOLDING CAR SEAT

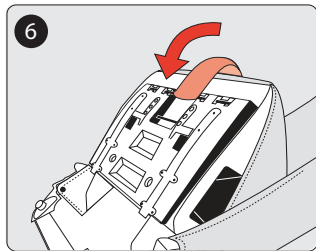
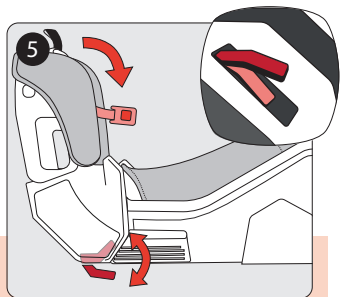
1. Unbuckle the harness and take out the red carry strap from behind the cover.
2. Unfasten both fabric panels and open them fully.
3. Adjust both expandable side wings to their inward position.
4. Press down on the silver harness release button to loosen the harness straps.



## FOLDING CAR SEAT

5. Place the car seat on its back, pull on the red release levers while pushing the car seat forward in on itself.
6. Fasten the red carry strap on the first metal bar on the bottom of the seat.

► **IMPORTANT: Make sure car seat is correctly secured by the carry strap. Injury could occur if not properly secured.**



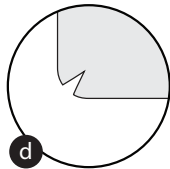
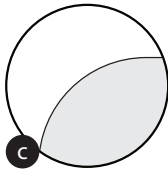
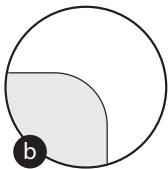
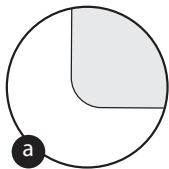
# COVER

## DIONO® COVER TOOL

The Diono® Cover Tool was designed to help you re-attach the cover to your car seat after you remove it for cleaning or replace it for a color change. **WARNING: This is not a toy.**



- a. Smaller curved edge to help push the car seat cover into smaller corners.
- b. Large curved tapered edge to help get into tight spaces.
- c. Thick end to help guide the cover into the shell of the car seat.
- d. Special slot to help with the installation of the elastic loops on the car seat covers.



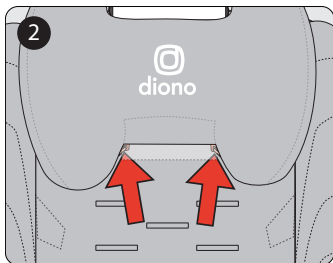
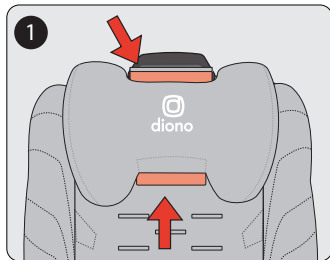
# COVER

- ▶ **HINT:** Before removal, have your phone handy and take photos of the process for future reference.
- ▶ **Tip:** Use the cover tool to help with the installation of the seat cover.

## REMOVAL

### Headrest

1. Pull out the plastic tabs located at the top and bottom of the headrest cover.
2. Detach the elastic loops from the bottom of the headrest cover.
3. Remove the headrest cover.

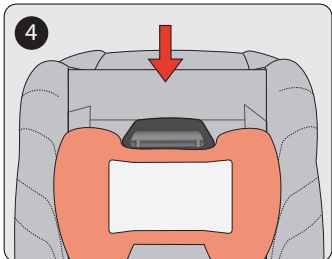
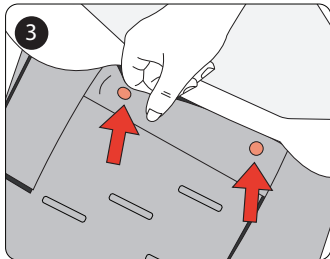
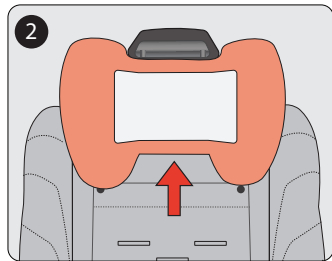




## COVER

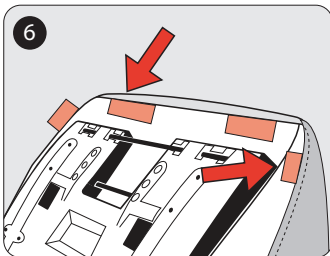
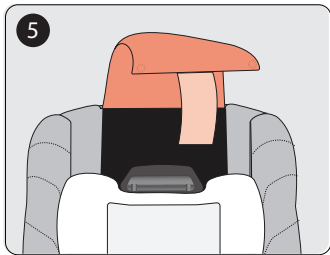
### Seat Cover

1. Remove the harness system, buckle, and buckle pad.
2. Push the headrest up to the highest position.
3. Unfasten the snaps under the flap located under the headrest and pull down the fabric panel.
4. Push the headrest to lowest position.
  - Be careful to keep the seat cover fabric out of the headrest channel.



## COVER

5. Pull the top flap up from behind the headrest.
6. Underneath the seat bottom, remove the four plastic tabs. Then pull the seat cover bottom free from the seat shell.
7. Gently pull the seat cover fabric out of the plastic channel around the shell and pull the seat cover over the headrest shell.
8. Remove the elastic band from around the hook located on both sides of the car seat shell near the lower booster belt guides.
9. Remove the seat cover from the seat shell.



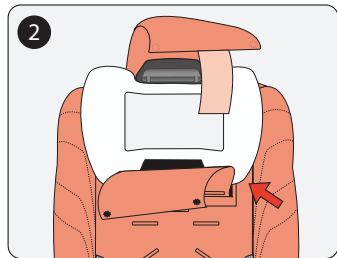
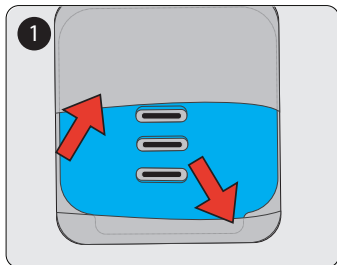
- ▶ **Remove the memory foam cushion from the seat cover bottom before washing.**

# COVER

## INSTALLATION

### Cover

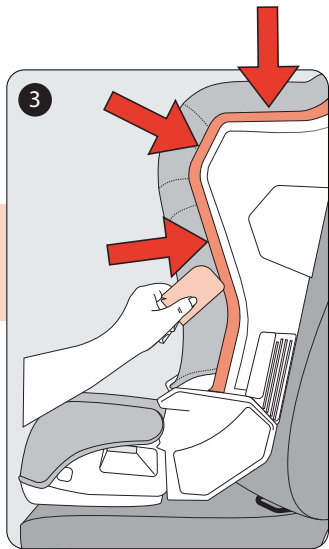
1. Insert the memory foam cushion into slots underneath the seat cover bottom.
2. Pull the car seat cover over the headrest and align it with the car seat shell.



## COVER

3. Tuck the elastic edge of the car seat cover into the car seat shell channel located along the edge of the car seat.

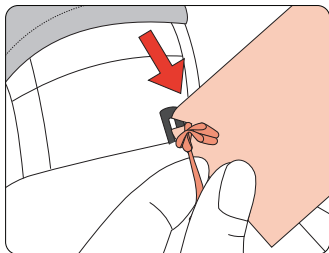
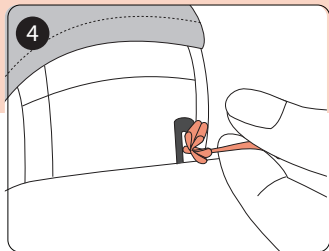
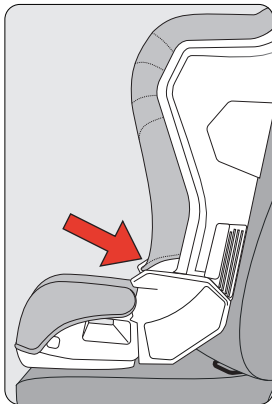
► **Tip: Use the Diono® Cover Replacement Assistant Cover Tool to help with the installation of the seat cover.**



## COVER

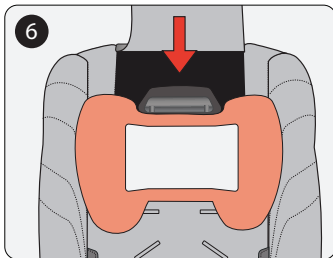
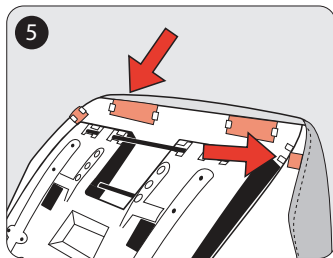
4. Pull the elastic band down and around the hook located on both sides of the car seat shell near the lower booster belt guides.

- ▶ **Tip: Use the Diono® Cover Replacement Assistant Cover Tool to help with the installation of the seat cover.**



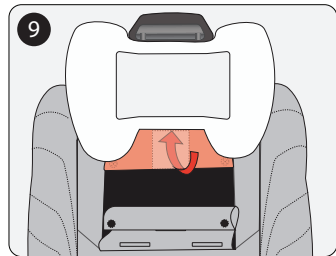
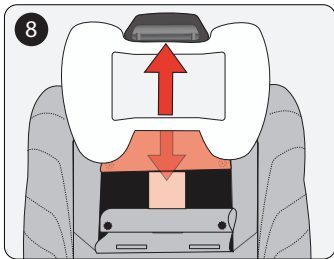
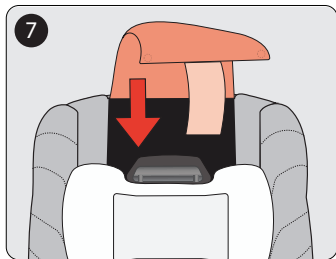
## COVER

5. On the seat bottom insert the four plastic tabs into the dedicated slots and pull the seat cover over the side wings and base.
6. Move the headrest to the lowest position.



## COVER

7. Gently guide the plastic flap attached to the top fabric flap underneath the headrest, making sure the fabric flap is not twisted and lays flat.
8. Raise the headrest to the highest position making sure the top fabric flap stays in place.
9. Tuck the plastic flap up and under top the fabric flap.

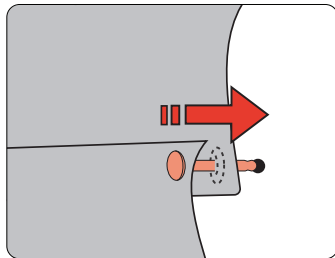
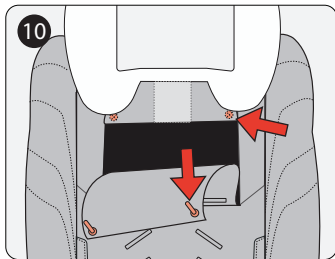
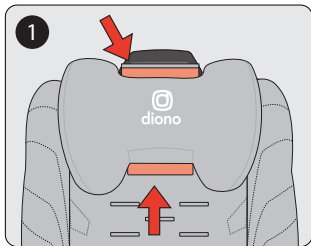


## COVER

10. Pull the bottom fabric flap up, making sure it is flat and not twisted. Insert the snaps through the holes of the top fabric flap and then into shell. You will hear an audible **“click”**.
11. Reattach the buckle and harness system.

### Headrest

1. Pull headrest cover over headrest and insert plastic tabs into top and bottom of headrest.

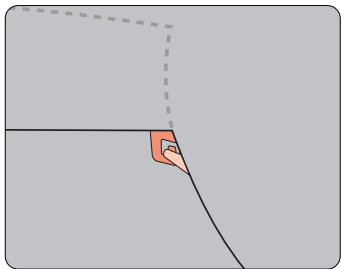
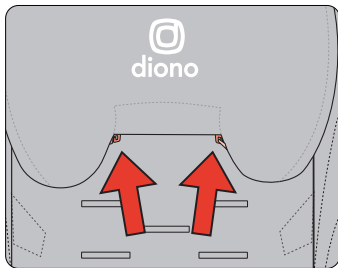
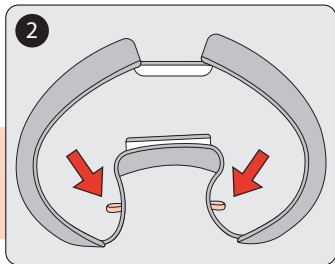




## COVER

2. Attach the elastic loops located on each side of the bottom of the headrest cover over the hooks located in the headrest shell.

**NOTE:** It may be easier to feel around on the headrest shell and find the hooks before attaching the elastic loops.

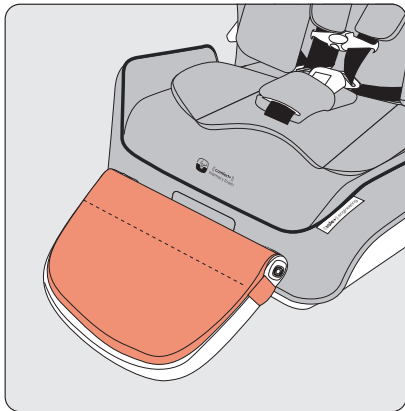
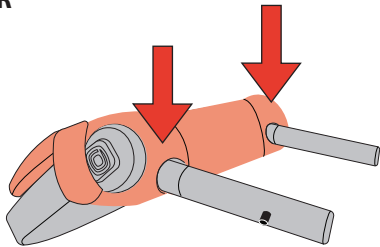


## COVER

**ANTI-REBOUND PANEL (ARP) COVER** (Only included with select models)

**To remove,** open the hook and loop strip located on the underside of the panel, then slide the ARP out of the cover.

**When installing,** carefully slide the ARP arms into the designated slots on the cover, and then position the cover onto the panel to ensure proper alignment. Once aligned, securely attach the hook and loop strip.



## CARE AND MAINTENANCE

**CLEANING FABRICS:** Seat cover, comfort insert, center buckle pad and harness pads.

- ▶ **REMOVE the memory foam insert from the seat pad, harness pads, and newborn travel wedge (for select models) prior to washing. DO NOT wash memory foam.**

Machine or hand wash fabrics in cold water on gentle cycle with mild detergent. Dry flat and away from direct sunlight before re-use or storage. **DO NOT bleach, iron or dry clean.**



**CLEANING HARNESS AND BUCKLE STRAPS:** Clean with damp cloth only. Wet cloth with warm water and mild soap. Wring cloth thoroughly and spot clean. Allow it to dry completely before use. **DO NOT use solvents, bleach, or abrasive cleaners. DO NOT soak or submerge the harness webbing.**



## CARE AND MAINTENANCE

**CLEANING PLASTICS:** Spot clean using a damp cloth and warm water with mild detergent. Towel dry completely before re-use or storage. **DO NOT bleach.**



**CLEANING CENTER BUCKLE:** Remove center buckle from car seat. Gently rinse **ONLY** the buckle mechanism in mildly hot water, or soak overnight. **DO NOT** submerge the buckle strap. Towel dry center buckle. Make sure the buckle is working correctly before reconnecting the center strap to the car seat. **DO NOT use detergents or lubricants.**

# WARRANTY

As a part of this Diono Warranty Policy (Policy), Diono, L.L.C. dba Diono, a Washington limited liability company (Diono U.S.A.), and its foreign-related companies, Diono ULC, a Canadian unlimited liability company (Diono Canada), Diono Ltd. a United Kingdom limited company (Diono U.K.), and Diono GmbH, a German company with limited liability (Diono E.U.) (Diono U.S.A., Diono Canada, Diono U.K., and Diono E.U. shall be collectively referred to herein as Diono), warrants its products, namely its car seats, strollers, baby carriers, and accessories thereto (collectively, the Products) to their non-merchant original retail Product purchasers (collectively, the Purchasers) as follows:

## 1. REGISTRATION

To qualify for the warranties detailed in this Policy, Diono instructs all Purchasers to complete the online Product Registration form and mail the owner registration card included in the Product Purchase to Diono within (30) days of purchase. Failing to take such actions may prevent a Purchaser from qualify for the warranties detailed in this Policy. For more information about Product registration, Purchasers are recommended to refer to their Product's Product Manual, the Diono Instruction Manual, and/or contact Diono as provided in Section 9 of this Policy. Such registration requirements detailed in this subsection of the Policy do not apply to warranties provided by Diono E.U. as detailed in Section 2.4 below.

## 2. GENERAL WARRANTY PERIOD

**2.1 General U.S. Warranty Period.** Diono U.S.A. warrants to Purchasers that its Products will be free from defects in material and workmanship for one (1) year from the date of original purchase (the U.S. Warranty Period). During the U.S. Warranty Period, Diono U.S.A. will, at its option, repair or replace a Product if it is found by Diono U.S.A. to be defective in material or workmanship.

**2.2 General Canadian Warranty Period.** Diono Canada warrants to Purchasers that its Products will be free from defects in material and workmanship for one (1) year from the date of original purchase (the Canadian Warranty Period). During the Canadian Warranty Period, Diono Canada will, at its option, repair or replace a Product if it is found by Diono Canada to be defective in material or workmanship.

**2.3 General U.K. Warranty Period.** Diono U.K. warrants to Purchasers that its Products will be free from defects in material and workmanship for one (1) year from the date of original purchase (the U.K. Warranty Period). During the U.K. Warranty Period, Diono U.K. will, at its option, repair or replace a Product if it is found by Diono U.K. to be defective in material or workmanship.

**2.4 General European Warranty Period.** Diono E.U. warrants to Purchaser that its Products are in conformity with their original contracts of sale (collectively, the Contracts), and notably will be free from defects in material and workmanship at the time the Products were delivered to Purchaser, for two (2) years from the date of original purchase (the European Warranty Period). The Products are presumed to be in conformity with the Contract if they are fit for the purposes for which products of the same type are normally used, or show the quality and performance which are normal in products of the same type and which Purchaser can reasonably expect, given the nature of the Products and taking into account any public statements on the specific characteristics of the goods made about them by Diono, particularly in advertising or on labelling. Purchaser must inform Diono E.U. of the Lack of Conformity within a period of two (2) months from the date on which Purchaser detected such lack of conformity discovery. There shall be deemed to not be a Lack of Conformity at the time the Contract was concluded when Purchaser was aware, or could not reasonably be unaware, of the Lack of Conformity. During the European Warranty Period, Diono E.U. will, at the

# WARRANTY

Purchaser's option, repair or replace a Product free of charge, within a reasonable time and without any significant inconvenience to the Purchaser, if it is found by Diono E.U. to be defective in material or workmanship respectively, unless this is impossible or disproportionately burdensome. When repair or replacement of a Product are impossible or disproportionately burdensome, the Purchaser may request a refund of the Product or a reduction of its price in proportion to the degree of non-conformity of the said Product, otherwise in accordance with the Diono Return Policy.

## 3. IMPLIED WARRANTIES

Any implied warranties applied to a Product, including without limitation implied warranties of merchantability and fitness for a particular purpose, shall be limited to the duration and terms of the express written warranties detailed in this Policy. Such warranties give Purchasers specific legal rights, which vary from jurisdiction-to-jurisdiction. Some U.S. states and Canadian provinces do not allow limitations on how long an implied warranty lasts or the exclusion or limitation of incidental or consequential damages. As such, such implied warranty limitations may not apply. Notwithstanding, neither Diono, nor any retailer selling any Product, authorizes any person to create for it any other warranty, obligation, or liability in connection with any Product not otherwise detailed in this Policy.

## 4. WARRANTY LIMITATIONS

**4.1 Damage Limitations.** The warranties identified in this Policy do not cover: (a) any Product purchased from a non-authorized Diono retailer; (b) the effects of normal wear and tear on a Product; (c) damage arising from Product repairs or modifications carried out by a third party; (d) a Product's involvement in an accident; (e) dissatisfaction with a Product's fit, weight, functionality, color or style; (f) Product damage resulting from negligence, modification, improper installation, accident, transport damage, incorrect washing of covers, corrosion, rust, mold, insufficient maintenance, misuse or abuse ; or (g) any Product defect that originated from material or design supplied by the Purchaser.

**4.2 Remedy Limitations.** It is expressly agreed that Diono's obligations and a Purchaser's remedies under the limited warranties provided in this Policy are exclusive and are strictly limited to the repair or replacement of a Product unless as otherwise detailed in Section 2 of this Policy. Such limited warranties are also conditional upon strict compliance with the provisions of the Instruction Manual for the Product(s) in question. In no event will Diono or any of their authorized manufacturers or retailers be liable to a Purchaser for any damages, including without limitation incidental or consequential damages, arising out of a Purchaser's use or inability to use any Product.

**4.3 Other Requirements and Limitations.** The warranties detailed in this Policy: (a) are non-transferable by Purchaser; (b) are only valid when supplied with proof of purchase from an authorized retailer or the Website; and (c) are valid only in the original country of the Product's purchase.

## 5. USE OF OUTSIDE PARTS AND ACCESSORIES

The use of covers, inserts, toys, accessories, or tightening devices produced by parties other than Diono or its authorized manufacturers (collectively, Outside Products) in any Product is not approved by Diono. The use of any Outside Product in conjunction with a Product could cause the Product to fail U.S., Canadian, U.K., and/or European safety standards. As a result, use of any Outside Product with a Product automatically voids any warranties granted under this Policy.

# WARRANTY

## 6. RESERVED RIGHTS

Diono reserves the right to: (a) discontinue any Product; (b) change a Product's parts, fabrics, or design; (c) substitute a Product with a comparable model or Product; or (d) apply a divergent manufacturer's guarantee for a Product in any specific geographical region.

## 7. SHIPPING CHARGES

Shipping charges for the replacement of any Product pursuant to a warranty granted under this Policy will be Purchaser's sole responsibility. Diono will not be responsible for any delays or damage caused by the shipment of a replacement Product. More information about Diono's shipping policies can be found in the Diono Shipping Policy.

## 8. QUESTIONS

Should any Purchaser have issues concerning a warranty or this Policy, Diono recommends contacting Diono Customer Service at 855-463-4666 or [support@diono.zendesk.com](mailto:support@diono.zendesk.com) for help or assistance for the U.S.. For Canada, call 1-866-954-9786 or [support@diono.zendesk.ca](mailto:support@diono.zendesk.ca) for help or assistance.

**diono**<sup>®</sup>  
#MadeOfSeattle



© 2024 Diono<sup>®</sup> LLC | 14810 Puyallup Street E | Suite 200  
Sumner WA 98390 | United States  
United States: Diono<sup>®</sup>.com | 1-855-463-4666  
Canada: Diono<sup>®</sup>.ca | 1-866-954-9786

Made in China | All rights reserved  
revised/revisado 20241009